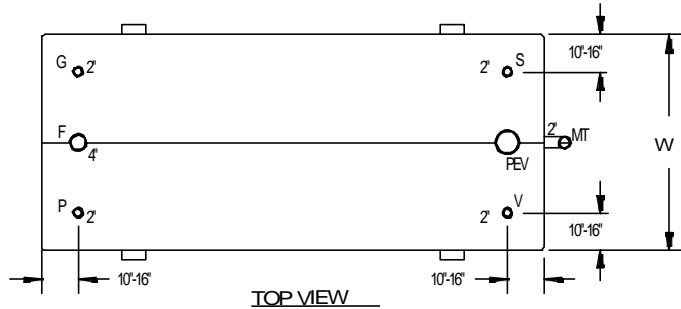
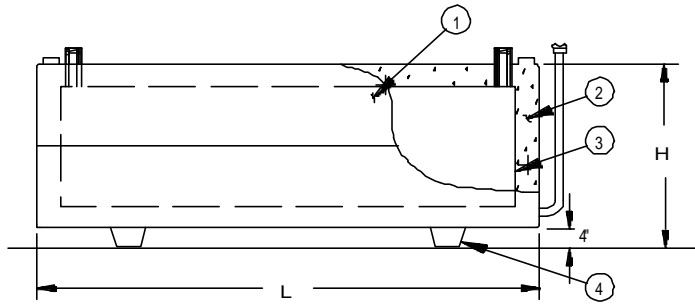


GENERAL INFORMATION



TOP VIEW

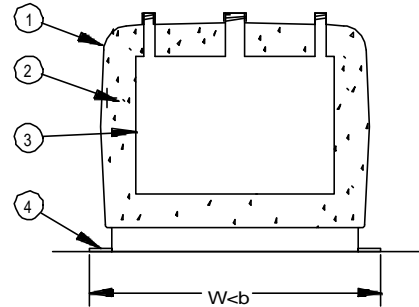


SIDE VIEW

FEATURES

MULTI-HAZARD 4 HOUR FIRE RATED FULLY LISTED DOUBLE WALL TANK ASSEMBLY

- ① 360° Secondary Containment Tank
- ② 6" Thick, Lightweight, Impact and Projectile Resistant Insulating Concrete
- ③ UL142 Steel Primary and Secondary Containment tanks.
- ④ Integral Supports and Seismic Restraints



LEGEND

P	Pump
F	Fill
G	Level Gage
V	Normal Vent
PEV	Primary Emer. Vent
MT	Monitor Tube
S	Spare

- Entire tank assembly is listed as a MULTI-HAZARD RATED INSULATED and PROTECTED ABOVEGROUND TANK for FLAMMABLE and COMBUSTIBLE LIQUIDS - UL 2085 PROTECTED, SWRI 95-03 and 93-01, and UNIFORM FIRE CODE STANDARD A-II-F-1*.
- Outer steel tank protects the insulation from the harmful effects of the weather and from damage during normal use.
- Lightweight design makes delivery and installation much easier than normal weight concrete tanks.
- Outer steel tank capacity is greater than 110% of the capacity of the primary tank.
- Proprietary design and insulating concrete provide fire protection exceeding the requirements of Uniform Fire Code Test Standard A-II-F-1 for Fire Protected Aboveground Storage Tanks.
- Specially engineered construction protects the insulated primary steel tank from ballistic impact in accordance with Section 77.203(d)(2) of the Uniform Fire Code.
- Outer steel tank is protected from the elements with a high performance industrial epoxy and urethane coating system.
- Integral supports provide 4" ground clearance and seismic anchoring capability.
- All fittings are steel pipe.
- The monitor tube allows physical monitoring of the outer steel secondary containment tank.
- Dispensing & Storage: Gasoline, Diesel, Ethanol, Methanol, Jet Fuels, Lube Oils
- Waste product storage: Oil, Solvents, Anti-freeze
- Optional fuel dispensing and waste oil equipment packages available
- Optional UL Listed spill containment system available.
- Optional access platform available.
- Meets requirements of NFPA 30 for above ground storage tanks.
- Electronic monitoring capability.
- Environmentally safe.
- No underground storage tank liability insurance required.
- Designed to withstand natural disasters including earthquakes and fires.
- Can be easily relocated.

MODEL NO.	MINIMUM CAPACITY	OUTER TANK DIMENSIONS			SUPPORT WIDTH, W < b	APPROX. WEIGHT
		HEIGHT, H	WIDTH, W	LENGTH, L		
MHR - D - 250	250	3' 6"	4' 1"	7' 1"	4' 4"	4,150
MHR - D - 500	500	4' 6"	6' 0"	6' 1"	6' 2"	5,650
MHR - D - 500D	250/250	4' 6"	6' 0"	6' 1"	6' 2"	5,800
MHR - D - 1000	1,000	4' 6"	6' 0"	11' 1"	6' 2"	9,250
MHR - D - 1000D	500/500	4' 6"	6' 0"	11' 1"	6' 2"	9,400
MHR - D - 1000S2	750/250	4' 6"	6' 0"	11' 1"	6' 2"	9,400
MHR - D - 1500	1,500	4' 6"	8' 3"	11' 1"	8' 4"	11,600
MHR - D - 1500D	750/750	4' 6"	8' 3"	11' 1"	8' 4"	11,600
MHR - D - 1500S2	1,000/500	4' 6"	8' 3"	11' 1"	8' 4"	12,300
MHR - D - 2000	2,000	5' 7"	8' 3"	11' 1"	8' 4"	12,800
MHR - D - 2000D	1,000/1,000	5' 7"	8' 3"	11' 1"	8' 4"	12,800
MHR - D - 2000S2	1,500/500	5' 7"	8' 3"	11' 1"	8' 4"	13,600

* UFC Standard A-II-F-1 was formerly known as UFC Standard 79-7.

Specifications subject to change without notice.



**INDUSTRIAL METAL
FABRICATORS, INC.**
(888) 333-TANK

SUPERVAULT[®] MH
MULTI-HAZARD RATED, PROTECTED TANK

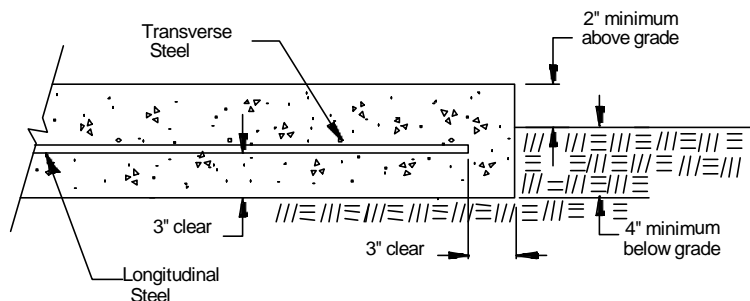
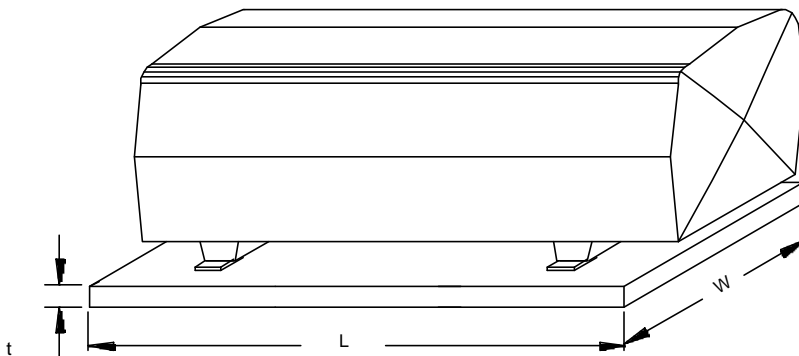
DATE:
4/12/96

REVISION NO.:
0

REVISION DATE:
6/26/96

DRAWING NUMBER
8.111

MINIMUM FOUNDATION REQUIREMENTS



MATERIAL SPECIFICATIONS

CONCRETE: Reinforced portland cement concrete achieving a minimum 28 day compressive strength of 3000 psi.

REINFORCING STEEL: All reinforcing steel shall be deformed bars conforming to ASTM A615 Grade 60. Bar sizes and quantities shown in this table are minimums for each slab.

ANCHOR BOLTS: If required, anchor bolts shall be ITW-RAMSET RedHead Trubolt Wedge Anchors, or equal. Minimum bolt size, quantity, and placement shall be per drawing No. 8.136.

NOTES

- FOUNDATION SIZES SHOWN HERE ARE DESIGNED TO LIMIT THE MAXIMUM SOIL BEARING PRESSURE TO UNDER 1000 PSF.
- THE FOUNDATION MAY BE INSTALLED AS INDEPENDANT SLABS AS SHOWN ABOVE OR AS ONE SLAB IF THE REINFORCING STEEL IS CARRIED CONTINUOUSLY THROUGHOUT THE MIDDLE PORTION.
- THE SLABS MAY BE EXTENDED BEYOND THE TANK FACE WITHOUT CHANGING THE REQUIREMENTS FOR SLAB THICKNESS OR REINFORCEMENT FOR LOADS IMPOSED BY THE TANK AND ITS CONTENTS.
- THESE DETAILS ARE FOR CAST-IN-PLACE SLABS ONLY AND DO NOT APPLY TO PRECAST SLABS.

MODEL NO.	SLAB SIZES (all dimensions in inches)			REINFORCING STEEL		
	L	W	t	Longitudinal	Transverse	Max. Spacing
				Bar Size	Bar Size	
MHR - D - 250	96	60	6	#4	#4	18"
MHR - D - 500	84	84	6	#4	#4	18"
MHR - D - 500D	84	84	6	#4	#4	18"
MHR - D - 1000	144	84	6	#4	#4	18"
MHR - D - 1000D	144	84	6	#4	#4	18"
MHR - D - 1000S2	144	84	6	#4	#4	18"
MHR - D - 1500	144	108	6	#4	#4	18"
MHR - D - 1500D	144	108	6	#4	#4	18"
MHR - D - 1500S2	144	108	6	#4	#4	18"
MHR - D - 2000	144	108	6	#4	#4	18"
MHR - D - 2000D	144	108	6	#4	#4	18"
MHR - D - 2000S2	144	108	6	#4	#4	18"

Specifications subject to change without notice.



**INDUSTRIAL METAL
FABRICATORS, INC.**
(888) 333-TANK

SUPERVAULT[®] MH
MULTI-HAZARD RATED, PROTECTED TANK

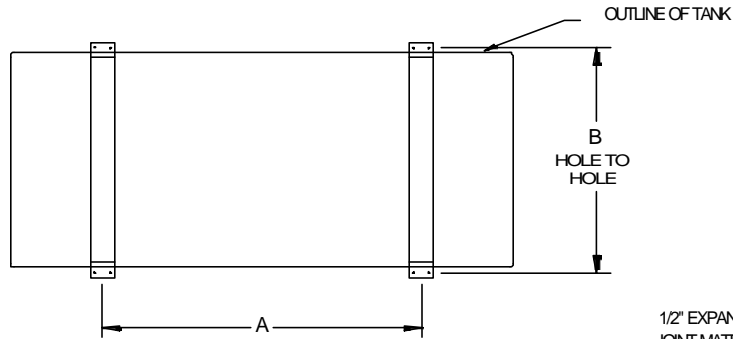
DATE:
6/1/93

REVISION No.:
4

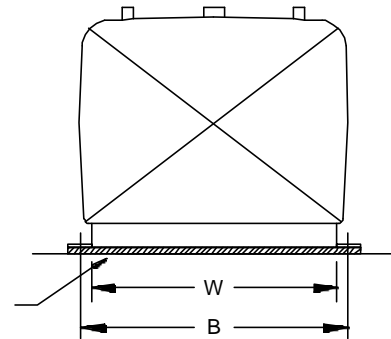
REVISION DATE:
8/14/98

DRAWING NUMBER
8.126

TANK SUPPORTS AND SEISMIC ANCHORAGE REQUIREMENTS

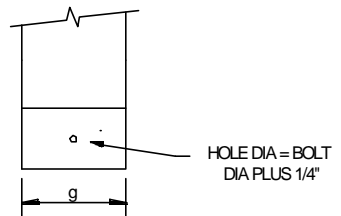
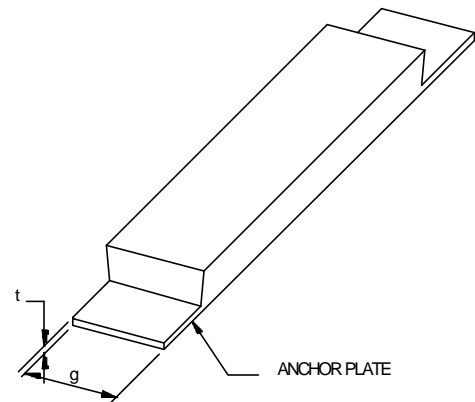


PLAN VIEW

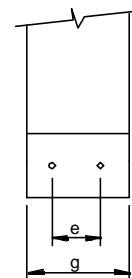


END VIEW

- Tank supports, base plates, and anchor bolts meet the requirements of the Uniform Building Code for Foundation Loads and Seismic Zone 4.
- For the anchor bolt size and quantity specified below the minimum concrete strength at 28 days must be 3000 psi or greater.
- If tank anchorage is required, the tank shall be installed on concrete pads as shown on Drawing 8.126 and anchored according to this drawing. All specified bolt diameters and embedment depths are for post-installed ITW-Ramset / Redhead Trubolt Wedge Anchors. Maximum embedment depth must not exceed the value shown + 1/4". Minimum edge distance is 6 bolt diameters.



TYPE 1



TYPE 2

MODEL NO.	A inches	B inches	W inches	ANCHOR PLATE & BOLTING				e inches	g inches
				TYPE	t	BOLT DIA	EMBEDMENT		
MHR - D - 250	54	49	43	1	1/4	1/2	2 1/2	n/a	6
MHR - D - 500	44	71	65	1	1/4	1/2	2 1/2	n/a	10 1/2
MHR - D - 500D	44	71	65	1	1/4	1/2	2 1/2	n/a	10 1/2
MHR - D - 1000	88	71	65	1	1/4	5/8	2 3/4	n/a	10 1/2
MHR - D - 1000D	88	71	65	1	1/4	5/8	2 3/4	n/a	10 1/2
MHR - D - 1000S2	88	71	65	1	1/4	5/8	2 3/4	n/a	10 1/2
MHR - D - 1500	88	97	91	2	5/16	5/8	2 3/4	7 1/2	12 1/2
MHR - D - 1500D	88	97	91	2	5/16	5/8	2 3/4	7 1/2	12 1/2
MHR - D - 1500S2	88	97	91	2	5/16	5/8	2 3/4	7 1/2	12 1/2
MHR - D - 2000	88	97	91	2	5/16	5/8	2 3/4	7 1/2	12 1/2
MHR - D - 2000D	88	97	91	2	5/16	5/8	2 3/4	7 1/2	12 1/2
MHR - D - 2000S2	88	97	91	2	5/16	5/8	2 3/4	7 1/2	12 1/2

Specifications subject to change without notice.



**INDUSTRIAL METAL
FABRICATORS, INC.**
(888) 333-TANK

SUPERVAULT[®] MH
MULTI-HAZARD RATED, PROTECTED TANK

DATE:
4/12/96

REVISION No.:

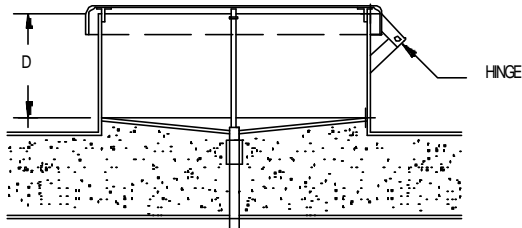
REVISION DATE:

DRAWING NUMBER
8.136

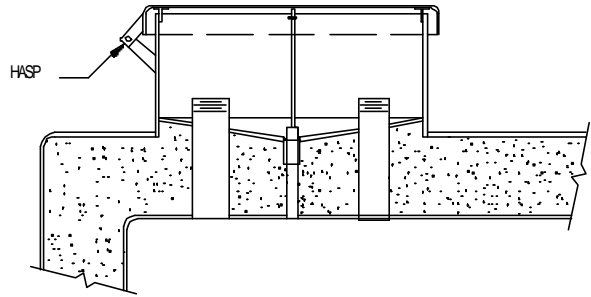
Spill Containment

- Integral Spill Containment Pan
- Screw-On Spill Containment Pan
- Integral Waste Oil Receptacle
- Screw-On Waste Oil Receptacle

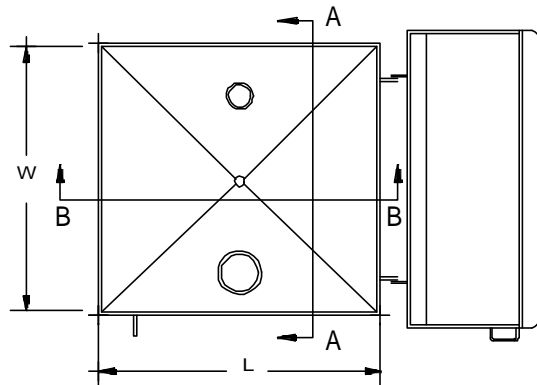
INTEGRAL SPILL CONTAINMENT PAN



SECTION B-B



SECTION A-A



TOP VIEW

MODEL	CAPACITY	W	L	D
8-206-16	16 GALLONS	20	20	10

STANDARD EQUIPMENT

1. 3/4" DRAIN VALVE
2. LOCKABLE HINGED COVER
3. 4" FILL FITTING
4. 2" SPARE FITTING

OPTIONAL EQUIPMENT

1. AUTOMATIC FUEL SHUT-OFF VALVE
2. DROP TUBE
3. FILL CAP AND ADAPTER

FEATURES

- THE SPILL CONTAINMENT PAN IS INTENDED TO COLLECT ANY INCIDENTAL SPILLAGE WHICH MAY OCCUR UPON DISCONNECTION OF THE DELIVERY TRUCK HOSE.
- THE SPILL CONTAINMENT PAN IS AN INTEGRAL PART OF THE LISTED TANK ASSEMBLY.
- THE INTEGRAL SPILL CONTAINMENT PAN AND LID ARE CONSTRUCTED OF HEAVY GAUGE STEEL FOR COMMERCIAL/INDUSTRIAL SERVICE DUTY.
- THIS MODEL OF SPILL CONTAINMENT PAN IS OUTSIDE THE PRIMARY TANK SO IT DOES NOT REDUCE THE WORKING CAPACITY OF THE TANK.
- UNLIKE INTERNAL OVERFILL PANS, TRUSCO'S INTEGRAL SPILL CONTAINMENT PAN WILL NOT ALLOW BACKFLOW OF FUEL FROM THE TANK INTO THE PAN IF THE DRAIN VALVE IS OPENED IN A FULL TANK CONDITION.
- HANDLES AND A LOCKABLE HASP ARE STANDARD FEATURES.
- THE SPILL CONTAINMENT PAN WILL BE LOCATED PER STANDARD FITTING CONFIGURATIONS FOR A PARTICULAR TANK SIZE.
- SPECIFY MODEL NUMBER WHEN ORDERING.
- THE INTEGRAL SPILL CONTAINMENT PAN IS COLOR COATED TO MATCH THE VAULT WITH A HIGH PERFORMANCE EPOXY AND URETHANE COATING SYSTEM FOR EASY CLEAN UP AND MAINTENANCE.

Specifications subject to change without notice.



**INDUSTRIAL METAL
FABRICATORS, INC.**
(888) 333-TANK

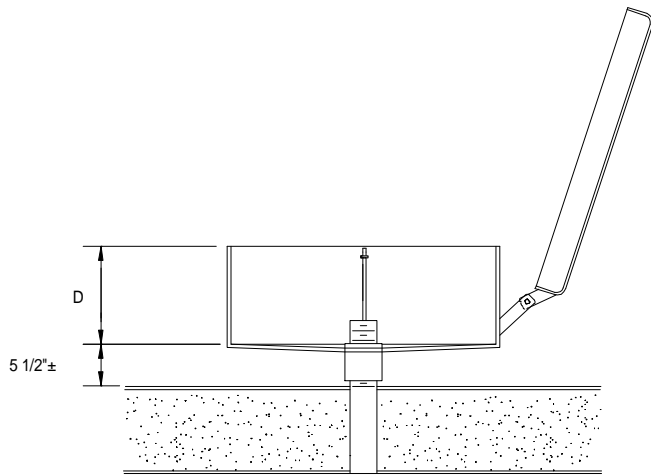
SUPERVAULT[®] MH
MULTI-HAZARD RATED, PROTECTED TANK

DATE:
4/12/96

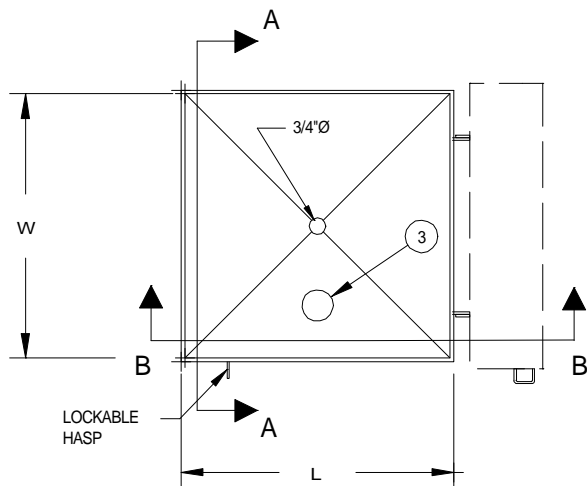
REVISION No.:
0

REVISION DATE:
6/26/96

DRAWING NUMBER
8.206



SECTION B-B



PLAN VIEW

- THIS PAN IS INTENDED TO COLLECT ANY INCIDENTAL SPILLAGE WHICH MAY OCCUR UPON DISCONNECTION OF THE DELIVERY TRUCK HOSE.
- THE EXTERNAL SPILL CONTAINMENT PAN AND LID ARE CONSTRUCTED OF HEAVY GAUGE STEEL FOR COMMERCIAL/INDUSTRIAL SERVICE DUTY.
- THE EXTERNAL SPILL CONTAINMENT PAN MOUNTS ON ANY EXISTING THREADED PIPE ALLOWING EASY INSTALLATION ONTO NEW OR EXISTING TANKS WITHOUT REDUCING THE WORKING CAPACITY OF THE TANK.

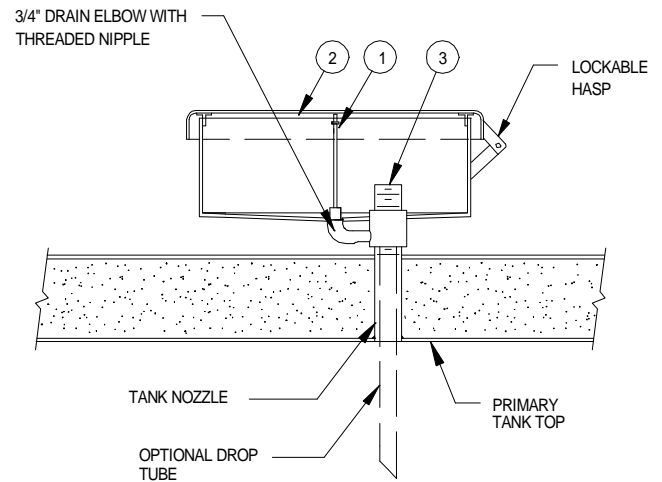
STANDARD EQUIPMENT LIST

1. DRAIN VALVE
2. LOCKABLE HINGED COVER
3. 2" OR 4" NOZZLE

OPTIONAL EQUIPMENT

1. DROP TUBES
2. FILL ADAPTERS AND CAPS
3. AUTOMATIC FUEL SHUTOFF VALVE

MODEL	CAPACITY	W	L	D
8-216-10	10 GALLONS	15 1/4	15 1/4	10
8-216-16	16 GALLONS	20	20	10



SECTION A-A

- THE EXTERNAL SPILL CONTAINMENT PAN MAY BE INSTALLED ON A 2" OR 4" EXISTING TANK NOZZLE. **SPECIFY NOZZLE SIZE WHEN ORDERING.**
- UNLIKE INTERNAL OVERFILL PANS, TRUSCO'S EXTERNAL SPILL CONTAINMENT PAN WILL NOT ALLOW BACKFLOW OF FUEL FROM THE TANK INTO THE PAN WHEN THE DRAIN VALVE IS OPENED IN A FULL TANK CONDITION.
- THE BOTTOM OF THE EXTERNAL SPILL CONTAINMENT PAN IS SLOPED TOWARD THE DRAIN VALVE TO ALLOW ALL PRODUCT TO BE EMPTIED WHEN THE VALVE IS OPENED.
- THE SCREW-ON SPILL CONTAINMENT PAN IS COLOR COATED TO MATCH THE VAULT WITH A HIGH PERFORMANCE EPOXY AND URETHANE COATING SYSTEM FOR EASY CLEAN UP AND MAINTENANCE.

SCREW-ON SPILL CONTAINMENT PAN FOR SUPERVAULT MH RECTANGULAR TANKS

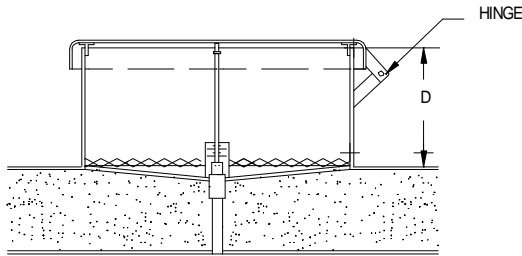
Specifications subject to change without notice.



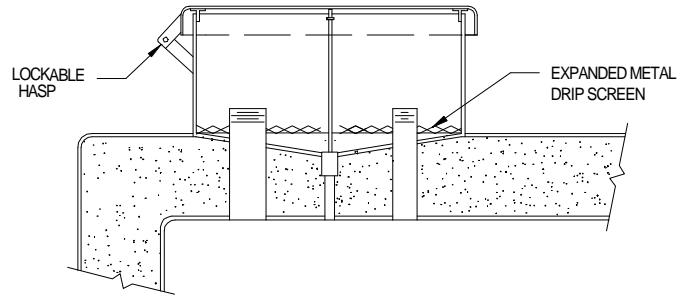
**INDUSTRIAL METAL
FABRICATORS, INC.**
(888) 333-TANK

SUPERVAULT® MH
MULTI-HAZARD RATED, PROTECTED TANK

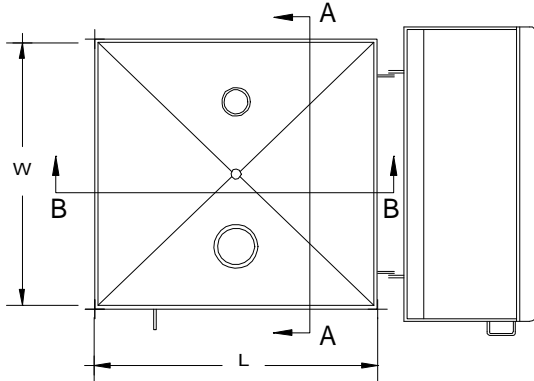
DATE: 4/12/96	REVISION No. : 0	REVISION DATE : 6/26/96	DRAWING NUMBER 8.216
------------------	---------------------	----------------------------	-------------------------



SECTION B-B



SECTION A-A



TOP VIEW

MODEL	CAPACITY	W	L	D
8-226-16	16 GALLONS	20	20	10

STANDARD EQUIPMENT

1. 3/4" DRAIN VALVE
2. STRONG EXPANDED METAL DRIP SCREEN
3. LOCKABLE HINGED COVER
4. 4" FILL FITTING WITH CAP
5. 2" SPARE FITTING WITH CAP

OPTIONAL EQUIPMENT

1. AUTOMATIC SHUT-OFF VALVE FOR FILL FITTING
2. ADAPTOR AND CAM-LOCK CAP FOR SPARE FITTING

FEATURES

- THE WASTE OIL RECEPTACLE IS INTENDED TO COLLECT ANY INCIDENTAL SPILLAGE WHICH MAY OCCUR.
- THE WASTE OIL RECEPTACLE IS AN INTEGRAL PART OF THE LISTED TANK ASSEMBLY.
- THE INTEGRAL WASTE OIL RECEPTACLE AND LID ARE CONSTRUCTED OF HEAVY GAUGE STEEL FOR COMMERCIAL/INDUSTRIAL SERVICE DUTY.
- THIS MODEL OF WASTE OIL RECEPTACLE IS OUTSIDE THE PRIMARY TANK SO IT DOES NOT REDUCE THE WORKING CAPACITY OF THE TANK.
- UNLIKE INTERNAL OVERFILL PANS, TRUSCO'S INTEGRAL WASTE OIL RECEPTACLE WILL NOT ALLOW BACKFLOW OF OIL FROM THE TANK INTO THE PAN IF THE DRAIN VALVE IS OPENED IN A FULL TANK CONDITION.
- HANDLES AND A LOCKABLE HASP ARE STANDARD FEATURES.
- THE WASTE OIL RECEPTACLE WILL BE LOCATED PER STANDARD FITTING CONFIGURATIONS FOR A PARTICULAR TANK SIZE.
- SPECIFY MODEL NUMBER WHEN ORDERING.
- THE INTEGRAL WASTE OIL RECEPTACLE IS COLOR COATED TO MATCH THE VAULT WITH A HIGH PERFORMANCE EPOXY AND URETHANE COATING SYSTEM FOR EASY CLEAN UP AND MAINTENANCE.

INTEGRAL WASTE OIL RECEPTACLE FOR SUPERVAULT MH RECTANGULAR TANKS

Specifications subject to change without notice.



**INDUSTRIAL METAL
FABRICATORS, INC.**
(888) 333-TANK

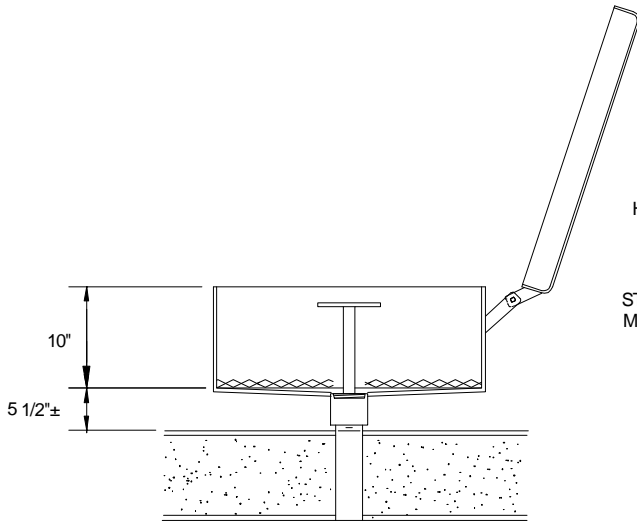
SUPERVAULT[®] MH
MULTI-HAZARD RATED, PROTECTED TANK

DATE:
4/12/96

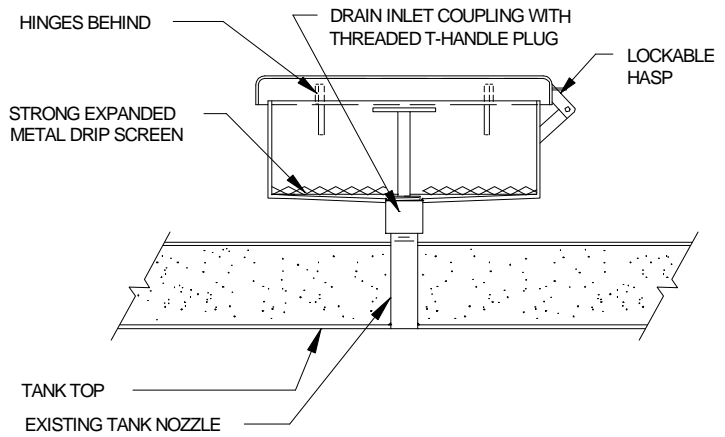
REVISION No. :
0

REVISION DATE :
6/26/96

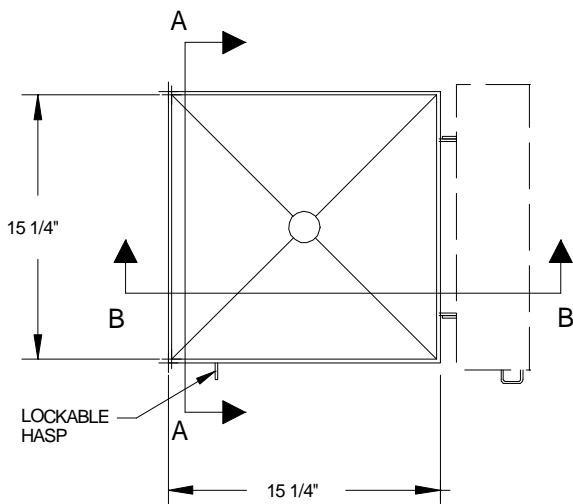
DRAWING NUMBER
8.226



SECTION B-B



SECTION A-A



- THE EXTERNAL WASTE OIL RECEPTACLE AND LID ARE CONSTRUCTED OF HEAVY GAUGE STEEL FOR COMERCIAL/INDUSTRIAL SERVICE DUTY. TOTAL CAPACITY IS 10 GALLONS.
- THE EXTERNAL WASTE OIL RECEPTACLE MOUNTS ON ANY EXISTING 4" THREADED PIPE OR ANY 2" THREADED PIPE WITH A REDUCING BUSHING ALLOWING EASY INSTALLATION ON NEW OR EXISTING TANKS. **SPECIFY NOZZLE SIZE WHEN ORDERING.**
- THE EXTERNAL WASTE OIL RECEPTACLE HAS A DRIP SCREEN ACROSS THE BOTTOM OF THE PAN TO ALLOW PARTS TO BE PLACED INSIDE FOR DRAINING OIL.
- THE BOTTOM OF THE EXTERNAL WASTE OIL RECEPTACLE IS SLOPED TOWARD THE DRAIN FITTING TO ALLOW THE PRODUCT TO DRAIN WHEN THE PLUG IS NOT INSTALLED.
- THE EXTERNAL WASTE OIL RECEPTACLE IS COLOR COATED TO MATCH THE VAULT WITH A HIGH PERFORMANCE EPOXY AND URETHANE COATING SYSTEM FOR EASY CLEAN UP AND MAINTENANCE.

SCREW-ON WASTE OIL RECEPTACLE FOR SUPERVAULT MH RECTANGULAR TANKS

Specifications subject to change without notice.



INDUSTRIAL METAL
FABRICATORS, INC.
(888) 333-TANK

SUPERVAULT[®] MH
MULTI-HAZARD RATED, PROTECTED TANK

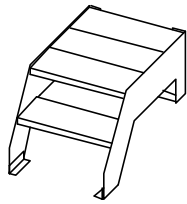
DATE:
4/12/96

REVISION No. :
0

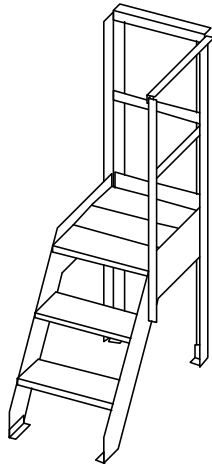
REVISION DATE :
6/26/96

DRAWING NUMBER
8.227

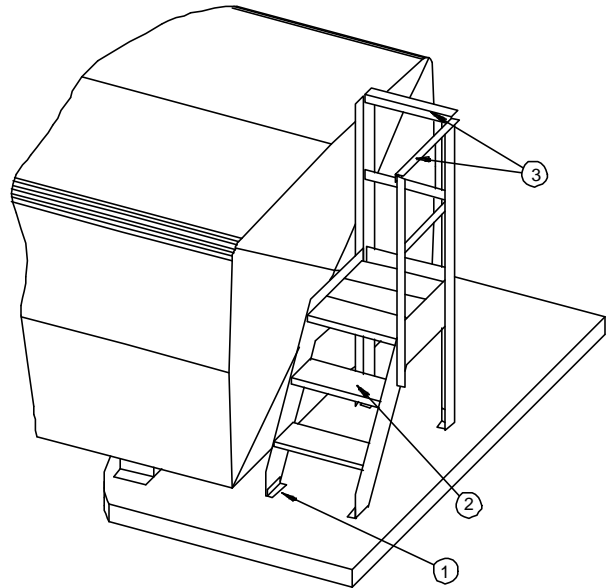
TANK ACCESS PLATFORM



Model 8-252



Model 8-253



COMPONENTS

- ① Anchor bolt attachment plates
- ② GRIP-STRUT Brand Slip-resistant safety tread.
- ③ Platform guard rail, 2" steel angle.

(Right Hand Model 8-253 Illustrated Above on MHR 2000)

Platform Model No.	Size	Platform Height	Guard Rail	Grab Rail	Intended for Tank Sizes
8-252	2 Steps	1' 10"	No	No	MHR 500, 1000 & 1500
8-253	3 Steps	2' 9"	Yes	No	MHR 2000

THIS ACCESS LADDER AND PLATFORM CONFORMS TO THE FOLLOWING REQUIREMENTS OF 201 CFR 1910 OSHA SAFETY & HEALTH STANDARDS AND TITLE CHAPTER 4, SUBCHAPTER 7, GENERAL INDUSTRY SAFETY ORDERS, OF THE CALIFORNIA ADMINISTRATIVE CODE (CAL / OSHA).

DESIGN LOAD: The platform surface is designed to support a moving load of 1000 pounds. The ladder is designed for a maximum load of 880 pounds concentrated on any two treads.

SLIP RESISTANCE: All walking or stepping surfaces must be slip-resistant, serrated or open tooth gratings only. Diamond plate, floor plate, or smooth treads are not allowed.

PLATFORM SIZE: The platform shall be a minimum of 22 inches in width and 20 inches in length.

RAILINGS: Railings shall be provided on the open side of all exposed fixed ladders. Guardrails shall be installed on open sides of platforms.

FEATURES

CONSTRUCTION: All bolted construction allows left or right handed installations. Standard configuration when factory assembled is right hand.

GRATING: GRIP STRUT brand safety grating and treads are used because they provide superior slip resistance in all directions. The open design permits passage of fluids or other slip inducing materials. Grating is galvanized.

PLATFORM: The platform structure is protected by industrial grade coatings. The treads are galvanized.

ANCHORING: For proper operation and compliance with safety regulations platform assembly must be anchored to its foundation with anchor bolts attached through the base plates.

ASSEMBLY: The access platform may be shipped assembled or knocked down at customers request.

Specifications subject to change without notice.



**INDUSTRIAL METAL
FABRICATORS, INC.**
(888) 333-TANK

SUPERVAULT[®] MH
MULTI-HAZARD RATED, PROTECTED TANK

DATE:
4/12/96

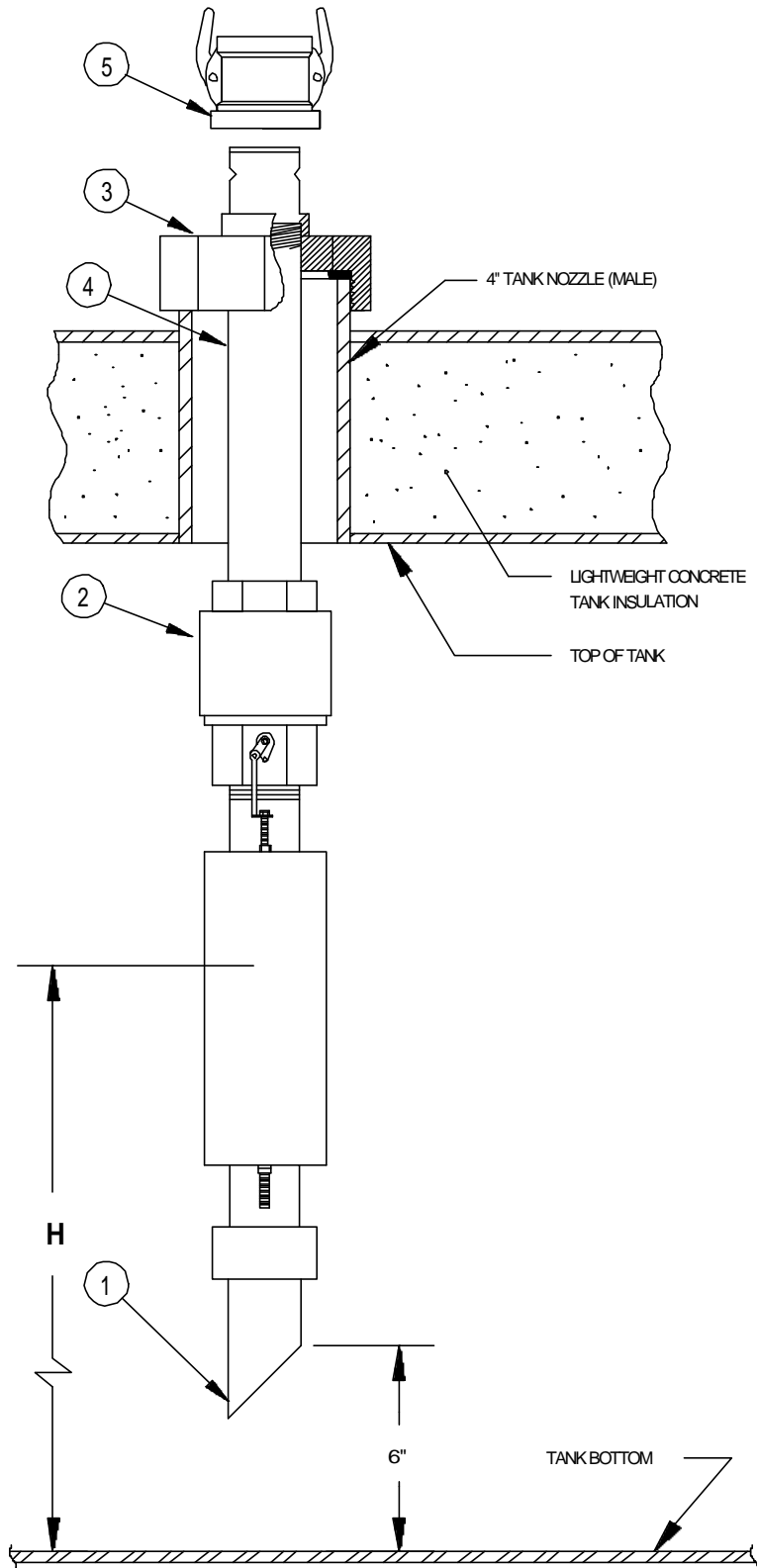
REVISION No.:
0

REVISION DATE:
6/26/96

DRAWING NUMBER
8.250

OVERFILL PREVENTION PACKAGE

for Top Mounted Fill Applications (Rectangular Tanks)



MATERIAL LIST

1. 2" DROP TUBE, CUT TO LENGTH (MORRISON 419)
2. FLOAT OPERATED VALVE (MORRISON 9095)
3. 4" TIGHT FILL ADAPTOR
4. 2" FILL PIPE, CUT TO LENGTH
5. 2" LOCKABLE CAP (MORRISON 800DCA-0400)

NOTES

- THIS SYSTEM PROVIDES POSITIVE OVERFILL PREVENTION ON PRESSURIZED DELIVERIES TO ABOVEGROUND TANKS. UPON DISCONNECTION OF SUPPLY HOSE, FUEL IS AUTOMATICALLY DRAINED FROM THE UPPER FILL PIPE.
- SHUTOFF VALVE INSTALLS ON 4" NPT TANK NOZZLE.
- FILL PIPE IS POSITIONED SO THAT THE SHUT OFF POINT (DIMENSION H) IS LOCATED AT 95% OF TANK CAPACITY AND THEN SECURED IN PLACE.
- DROP TUBE IS POSITIONED SO THAT THE CUT END IS A MAXIMUM OF 6" ABOVE THE TANK BOTTOM.
- THE FILL ADAPTOR IS DESIGNED TO BE DIRECT COUPLED ONTO A CAM-LOCK SPOUT ON THE NOZZLE OF THE FUEL DELIVERY TRUCK. THE CAP IS LOCKABLE.

Specifications subject to change without notice.



INDUSTRIAL METAL
FABRICATORS, INC.
(888) 333-TANK

SUPERVAULT [®] **MH**
MULTI-HAZARD RATED, PROTECTED TANK

DATE:
4/12/96

REVISION No.:
1

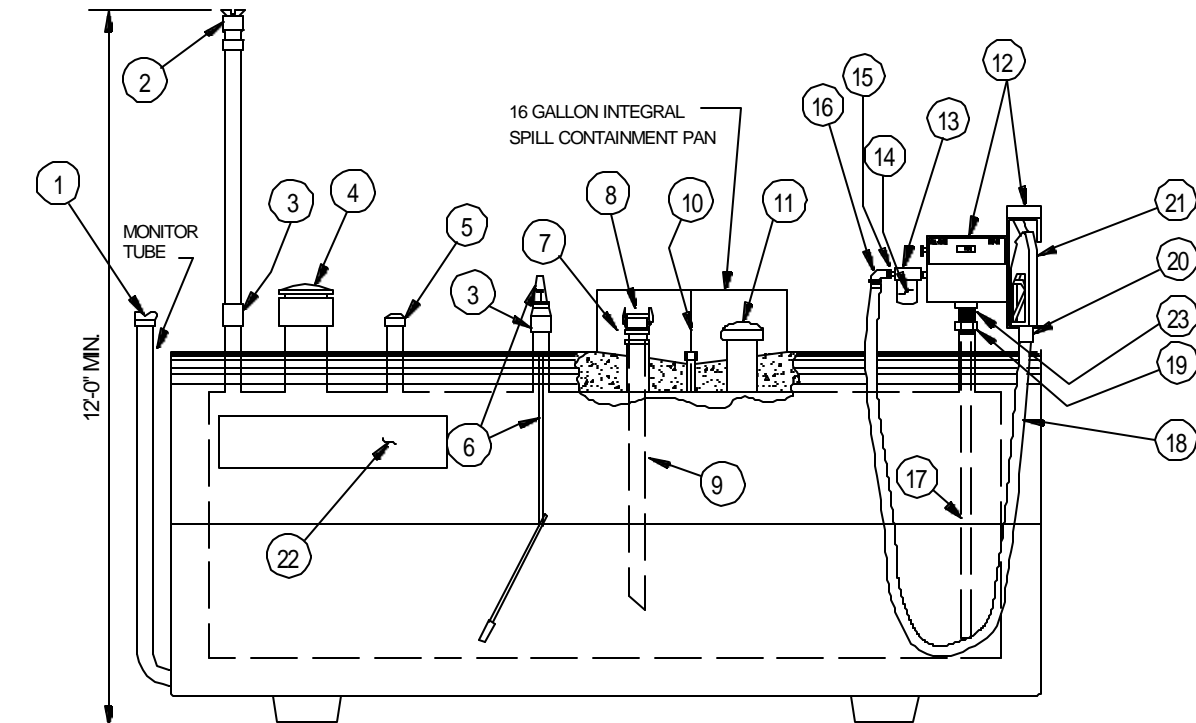
REVISION DATE:
4/25/01

DRAWING NUMBER
8.313

Systems

- Gasoline Dispensing System
 - With Phase I & II Balance Vapor Recovery
- Diesel Fuel Dispensing System
- Diesel Engine Supply System
- Waste Oil Storage System

GASOLINE DISPENSING SYSTEM



ITEM #	COMPONENT DESCRIPTION	PART NUMBER *
1	MONITOR TUBE SAFETY CAP	MORRISON: 678XA-0000AC, 2'
2	PRESSURE VACUUM VENT WITH RISER	MORRISON: 748A-0400AV, 2', 8oz
3	2' COUPLING, GALV(2)	
4	EMERGENCY VENT	MORRISON: 2440I
5	2' GALV CAP	
6	LEVEL GAUGE	KRUEGER: H2-(SIZE)
7	FILL CAP ADAPTOR	MORRISON: 305-0000AA, 2'
8	FILL CAP	MORRISON: 800DCA-0400, 2'
9	DROP TUBE	MORRISON: 419, 2'
10	3/4" DRAIN VALVE	
11	4" CAP	MORRISON: 578-0100AC
12	PUMP WITH METER, HOOK AND HOOD	FILL-RITE: FR702 for Gasoline
13	FILTER ADAPTOR	CIM-TEK: 200H-3-4
14	FILTER ELEMENT	CIM-TEK: 300HS10
15	3/4" BRASS BALL VALVES (2)	MORRISON: 691-04001V
16	3/4" 90° STREET ELL (GALV)	
17	SUCTION TUBE	SCHEDULE 40 PIPE, 1"
18	HOSE ASSEMBLY	3/4" x 12
19	2" UNION, GALV	
20	NOZZLE SWIVEL	3/4"
21	NOZZLE	CPW: 11A (leaded), 11AP (unleaded)
22	DECAL KIT	IMF: 8.305
23	2 X CLOSE GALV NIPPLE	

NOTE: 1. 2" VENT RISER IS SHIPPED LOOSE. A 2" PLASTIC SHIPPING PLUG IS INSTALLED IN VENT FITTING TO BE REMOVED PRIOR TO ATTACHING VENT RISER.
 2. THE EQUIPMENT PACKAGE IS INSTALLED WITH ALL PIPING, UNIONS, ELBOWS, TEES AND COUPLINGS SHOWN. PIPING BEYOND THE FITTINGS SHOWN IS THE RESPONSIBILITY OF THE PURCHASER.

Equipment and Specifications subject to change without notice.



**INDUSTRIAL METAL
FABRICATORS, INC.**
(888) 333-TANK

SUPERVAULT[®] MH
MULTI-HAZARD RATED, PROTECTED TANK

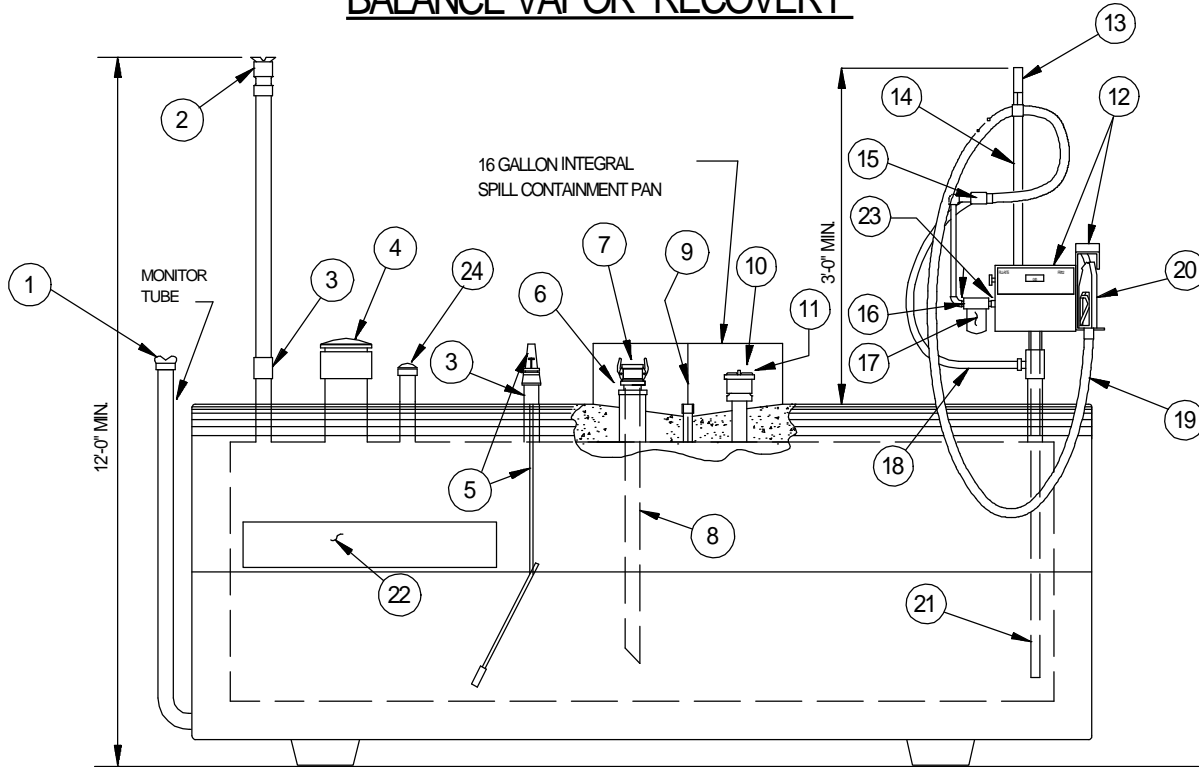
DATE :
4/12/96

REVISION No. :
2

REVISION DATE :
3/07/00

DRAWING NUMBER
8.322

GASOLINE DISPENSING SYSTEM with PHASE I & PHASE II BALANCE VAPOR RECOVERY



ITEM #	COMPONENT DESCRIPTION	PART NUMBER *
1	MONITOR TUBE SAFETY CAP	MORRISON: 678XA-0000AC, 2"
2	PRESSURE/VACUUM VENT WITH RISER	MORRISON: 748A-0400AV, 2", 8 oz.
3	2" COUPLERS, GALV (2)	
4	EMERGENCY VENT	MORRISON: 2440I
5	LEVEL GAUGE	KRUEGER: H2-(SIZE)
6	FILL CAP ADAPTOR	MORRISON: 305-0000AA, 2"
7	FILL CAP	MORRISON: 800DCA-0400, 2"
8	DROP TUBE	MORRISON: 419, 2"
9	3/4" DRAIN VALVE	
10	VAPOR RECOVERY CAP	OPW: 1711T-7085
11	VAPOR RECOVERY ADAPTOR	OPW: 1611AV-1620
12	PUMP WITH METER, HOOK, AND HOOD	FILL-RITE: FR702 for Gasoline
13	OVERHEAD HOSE RETRACTOR	POMECCO: 102-6P
14	HOSE RETRACTOR POST	IMF: 8.234
15	COAXIAL ADAPTOR	OPW: 38C-0038
16	FILTER ADAPTOR	CIM-TEK: 200H-3-4
17	FILTER ELEMENT	CIM-TEK: 300HS10
18	JUMPER HOSE	IRPCO: 3/4" x 24" with swivel
19	COAXIAL HOSE ASSEMBLY	DAYCO: 7574BTN-144, 1 1/2" X 12'
20	VAPOR RECOVERY NOZZLE	OPW: 11VF-0422 (leaded) or 11VF-0427 (unleaded)
21	SUCTION TUBE	SCHEDULE 40 PIPE, 1"
22	DECAL KIT	IMF: 8.305
23	3/4" BRASS BALL VALVES (2)	MORRISON: 691-04001V
24	2" GALV CAP	

NOTE: 1. 2" VENT RISER IS SHIPPED LOOSE. A 2" PLASTIC SHIPPING PLUG IS INSTALLED IN VENT FITTING TO BE REMOVED PRIOR TO ATTACHING VENT RISER.

2. THE EQUIPMENT PACKAGE IS INSTALLED WITH ALL PIPING, UNIONS, ELBOWS, TEES & COUPLINGS SHOWN. PIPING BEYOND THE FITTINGS SHOWN IS THE RESPONSIBILITY OF THE PURCHASER.

Equipment and Specifications subject to change without notice.



**INDUSTRIAL METAL
FABRICATORS, INC.**
(888) 333-TANK

SUPERVAULT[®] MH
MULTI-HAZARD RATED, PROTECTED TANK

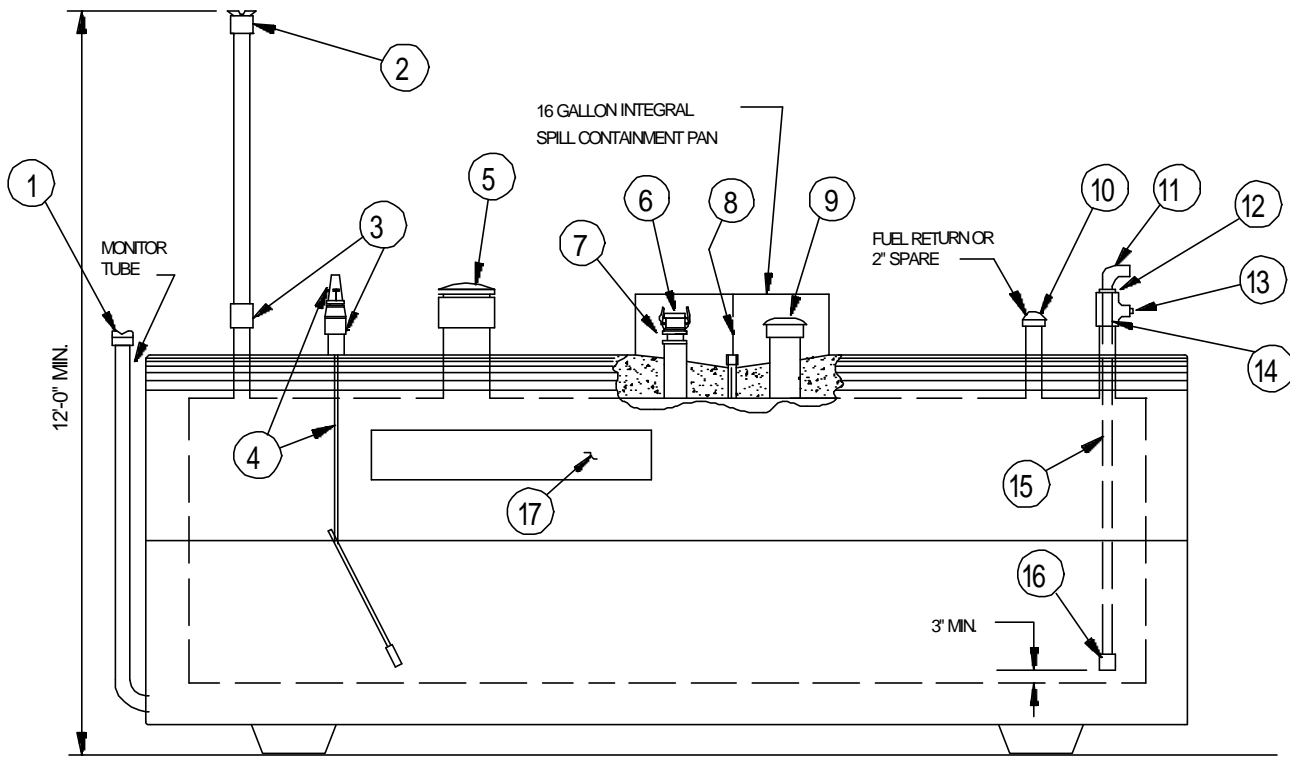
DATE:
4/12/96

REVISION No. :
2

REVISION DATE :
4/02/98

DRAWING NUMBER
8.332

DIESEL ENGINE SUPPLY



ITEM #	COMPONENT DESCRIPTION	PART NUMBER *
1	MONITOR TUBE SAFETY CAP	MORRISON: 678XA-0000AC
2	UPDRAFT VENT WITH RISER	MORRISON: 354, 2'
3	2" COUPLINGS, GALV (2)	
4	LEVEL GAUGE	KRUEGER: H2-(SIZE)
5	EMERGENCY VENT	MORRISON: 244CI
6	FILL CAP	MORRISON: 800DCA-0400, 2'
7	FILL CAP ADAPTOR	MORRISON: 305-0000AA, 2'
8	3/4" DRAIN VALVE	
9	4" CAP	
10	2" CAP	
11	1" STREET ELL, 90° (1)	
12	2" X 1" DOUBLE TAP FITTING (1)	
13	1" PLUG	
14	2" X 1" SCH 40 TEE	
15	SUCTION TUBE	SCHEDULE 40 PIPE, 1"
16	FOOT VALVE, DOUBLE POPPET	OPV: 92004A, 1"
17	DECAL KIT	IMF: 8.305

NOTE: 1. 2" VENT RISER IS SHIPPED LOOSE. A 2" PLASTIC SHIPPING PLUG IS INSTALLED IN VENT FITTING TO BE REMOVED PRIOR TO ATTACHING VENT RISER.
 2. THE EQUIPMENT PACKAGE IS INSTALLED WITH ALL PIPING, UNIONS, ELBOWS, TEES AND COUPLINGS SHOWN. PIPING BEYOND THE FITTINGS SHOWN IS THE RESPONSIBILITY OF THE PURCHASER.

Equipment and Specifications subject to change without notice.



**INDUSTRIAL METAL
 FABRICATORS, INC.**
 (888) 333-TANK

SUPERVAULT[®] MH
 MULTI-HAZARD RATED, PROTECTED TANK

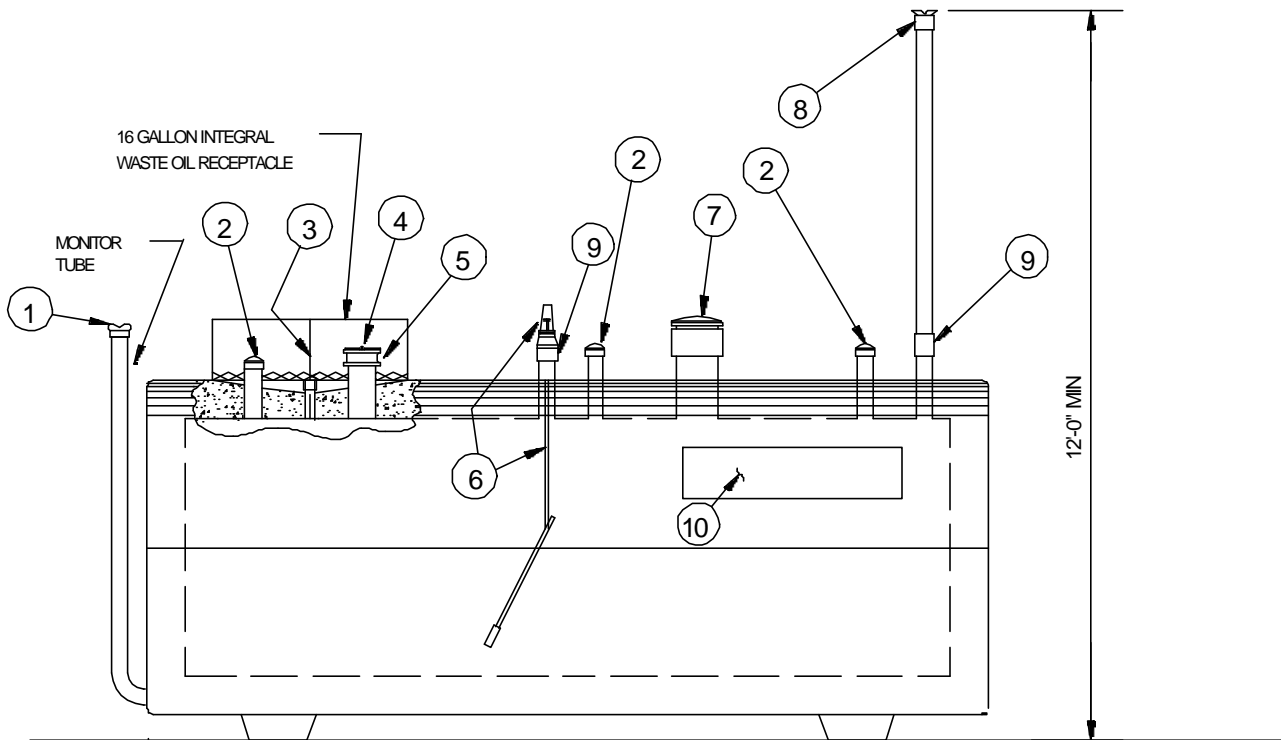
DATE:
4/12/96

REVISION NO.:
2

REVISION DATE:
3/07/00

DRAWING NUMBER
8.347

WASTE OIL STORAGE SYSTEM



ITEM #	COMPONENT DESCRIPTION	PART NUMBER *
1	MONITOR TUBE SAFETY CAP	MORRISON: 678XA-0000AC, 2"
2	2" CAP (3)	
3	3/4" DRAIN VALVE	
4	SUCTION PORT CAP	OPW: 634TT-7085, 4"
5	SUCTION PORT ADAPTOR	OPW: 633T-8076, 4"
6	LEVEL GAUGE	KRUEGER: H2(SIZE)
7	EMERGENCY VENT	MORRISON: 244CI
8	UPDRAFT VENT WITH RISER	MORRISON: 354, 2"
9	2" COUPLER, GALV (2)	
10	DECAL KIT	IMF: 8305

NOTE: 1. 2" VENT RISER IS SHIPPED LOOSE. A 2" PLASTIC SHIPPING PLUG IS INSTALLED IN VENT FITTING TO BE REMOVED PRIOR TO ATTACHING VENT RISER.
 2. THE EQUIPMENT PACKAGE IS INSTALLED WITH ALL PIPING UNIONS, ELBOWS, TEES AND COUPLINGS SHOWN. PIPING BEYOND THE FITTINGS SHOWN IS THE RESPONSIBILITY OF THE PURCHASER.

Equipment and Specifications subject to change without notice.



**INDUSTRIAL METAL
FABRICATORS, INC.**
(888) 333-TANK

SUPERVAULT[®] MH
MULTI-HAZARD RATED, PROTECTED TANK

DATE :
4/12/96

REVISION No. :
1

REVISION DATE :
4/02/97

DRAWING NUMBER
8.352



(one each side)

CAPACITY

6,000 GALLONS

(sample)

1 1/2" BLACK LETTERS
ON WHITE BACKGROUND
(one for each compartment locate
adjacent to fill nozzle)

FUEL TYPE

UNLEADED

REGULAR

DIESEL

WASTE OIL

1 1/2" WHITE LETTERS
ON RED BACKGROUND
(one adjacent to fill nozzle and
one adjacent to pump)

NOZZLE I.D.'s

FILL

VENT

EMER. VENT

MONITOR TUBE

1" RED LETTERS
ON WHITE BACKGROUND
(one near tank fitting)

CAUTION: THIS TANK TO CONTAIN
PETROLEUM PRODUCTS ONLY

1" & 3/4" BLACK LETTERS
ON WHITE BACKGROUND
(one for each compartment locate
adjacent to fill nozzle)

NO SMOKING

3" RED LETTERS, 1/2" STROKE
ON WHITE BACKGROUND
(one each side)

FLAMMABLE

(for gasoline systems)

3" RED LETTERS, 1/2" STROKE
ON WHITE BACKGROUND
(one each side)

COMBUSTIBLE

(for diesel and waste oil systems)

3" RED LETTERS, 1/2" STROKE
ON WHITE BACKGROUND
(one each side)

SUPERVAULT MH DECAL KIT

Specifications subject to change without notice.



INDUSTRIAL METAL
FABRICATORS, INC.
(888) 333-TANK

SUPERVAULT[®] MH
MULTI-HAZARD RATED, PROTECTED TANK

DATE :
4/12/96

REVISION No. :

REVISION DATE :

DRAWING NUMBER
8.305