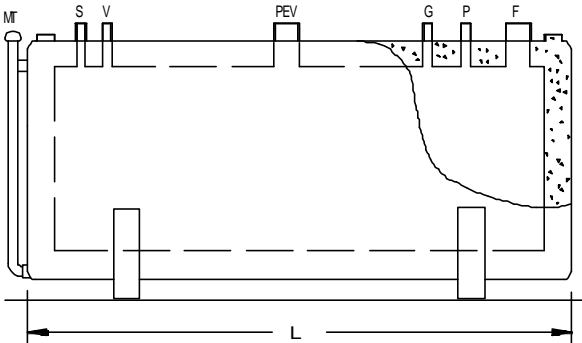
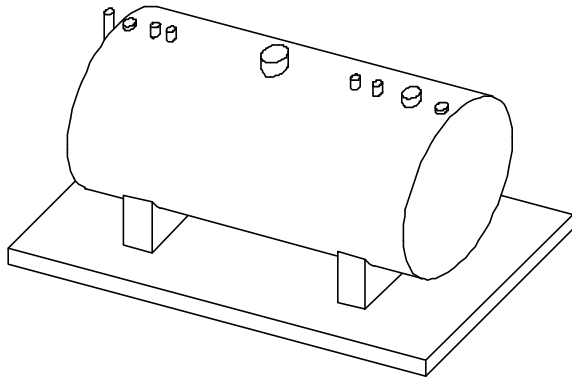


GENERAL INFORMATION



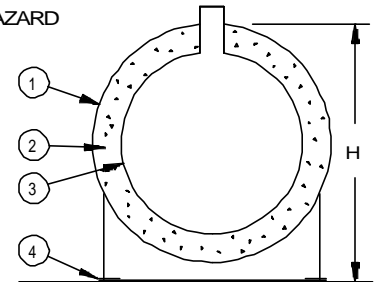
LEGEND

- P Pump
- G Level Gage
- V Normal Vent
- PEV Primary Emer. Vent
- F Fill
- MT Monitor Tube
- S Spare

FEATURES

- ① Fully Listed Double Wall Tank Assembly Multi-Hazard-4 Hour Fire Rated
- ② 6" Thick, Lightweight, Impact and Projectile Resistant Insulating Concrete
- ③ UL 142 Steel Primary & Secondary Containment Tanks
- ④ Integral Supports and Seismic Restraints

- Entire tank assembly is listed as a MULTI-HAZARD RATED INSULATED and PROTECTED ABOVEGROUND TANK for FLAMMABLE and COMBUSTIBLE LIQUIDS - UL 2085 PROTECTED, SwRI 95-03 and 93-01, and UNIFORM FIRE CODE STANDARD A-II-F-1.
- Outer steel tank protects the insulation from the harmful effects of the weather and from damage during normal use.
- Lightweight design makes delivery and installation much easier than normal weight concrete tanks.
- Outer steel tank capacity is greater than 110% of the capacity of the primary tank.



- Proprietary design and insulating concrete provide fire protection exceeding the requirements of Uniform Fire Code Test Standard A-II-F-1 for Fire Protected Above Ground Storage Tanks.
- Specially engineered construction protects the insulated primary steel tank from ballistic impact in accordance with Section 77.203(d)(2) of the Uniform Fire Code.
- Outer steel tank is protected from the elements with a high performance industrial epoxy and urethane coating system.
- Integral supports provide 4" ground clearance and seismic anchoring capability.
- All fittings are steel pipe couplings (F.P.T.).
- The monitor tube allows physical monitoring of the outer steel secondary containment tank.
- Dispensing & Storage:
Gasoline, Diesel, Ethanol, Methanol, Jet Fuels, Lube Oils
- Waste product storage:
Oil, Solvents, Anti-freeze
- Optional fuel dispensing and waste oil equipment packages available
- Optional UL Listed spill containment system available.
- Optional access platform available.
- Meets requirements of NFPA 30 for above ground storage tanks.
- Electronic monitoring capability.
- Environmentally safe.
- No underground storage tank liability insurance required.
- Designed to withstand natural disasters including earthquakes and fires.
- Can be easily relocated.

MODEL NO.	MINIMUM CAPACITY	PRIMARY TANK		OVERALL LENGTH	OVERALL HEIGHT	APPROX. WEIGHT
		DIAMETER	LENGTH			
MH -D1 - 250	250	37 1/4	60	6' 3"	4' 7"	3,700
MH -D1 - 500	500	37 1/4	107	10' 2"	4' 7"	5,400
MH -D1 - 750	750	37 1/4	160	14' 7"	4' 7"	7,400
MH -D2 - 500	500	50 5/8	60	6' 3"	5' 9"	5,100
MH -D2 - 750	750	50 5/8	87	8' 6"	5' 9"	6,500
MH -D2 - 1000	1,000	50 5/8	116	10' 11"	5' 9"	7,800
MH -D2 - 1500	1,500	50 5/8	173	15' 8"	5' 9"	10,600
MH -D2 - 2000	2,000	50 5/8	231	20' 6"	5' 9"	13,500
MH -D3 - 1000	1,000	64	73	7' 4"	6' 10"	7,600
MH -D3 - 1500	1,500	64	109	10' 4"	6' 10"	9,700
MH -D3 - 2000	2,000	64	145	13' 4"	6' 10"	12,000
MH -D3 - 3000	3,000	64	216	19' 3"	6' 10"	16,400
MH -D3 - 4000	4,000	64	288	25' 3"	6' 10"	22,600
MH -D4 - 2000	2,000	82 5/8	87	8' 6"	8' 5"	12,900
MH -D4 - 3000	3,000	82 5/8	130	12' 1"	8' 5"	16,700
MH -D4 - 4000	4,000	82 5/8	174	15' 9"	8' 5"	22,160
MH -D4 - 5000	5,000	82 5/8	216	19' 3"	8' 5"	26,000
MH -D4 - 6000	6,000	82 5/8	259	22' 10"	8' 5"	29,400
MH -D4 - 8000	8,000	82 5/8	348	30' 3"	8' 5"	37,300
MH -D4 - 10000	10,000	82 5/8	440	37' 11"	8' 5"	44,000
MH -D5 - 6000	6,000	114 5/8	145	13' 4"	11' 1"	28,800
MH -D5 - 8000	8,000	114 5/8	180	16' 3"	11' 1"	34,800
MH -D5 - 10000	10,000	114 5/8	230	20' 5"	11' 1"	41,500
MH -D5 - 12000	12,000	114 5/8	273	24' 0"	11' 1"	48,000
MH -D5 - 15000	15,000	114 5/8	338	29' 5"	11' 1"	55,600
MH -D5 - 20000	20,000	114 5/8	449	38' 8"	11' 1"	69,500

Note: Height minus 4 inches = outside width.

* UFC Standard A-II-F-1 was formerly known as UFC Standard 79-7.

Specifications subject to change without notice.



**INDUSTRIAL METAL
FABRICATORS, INC.**
(888) 333-TANK

SUPERVAULT[®] MH
MULTI-HAZARD RATED, PROTECTED TANK

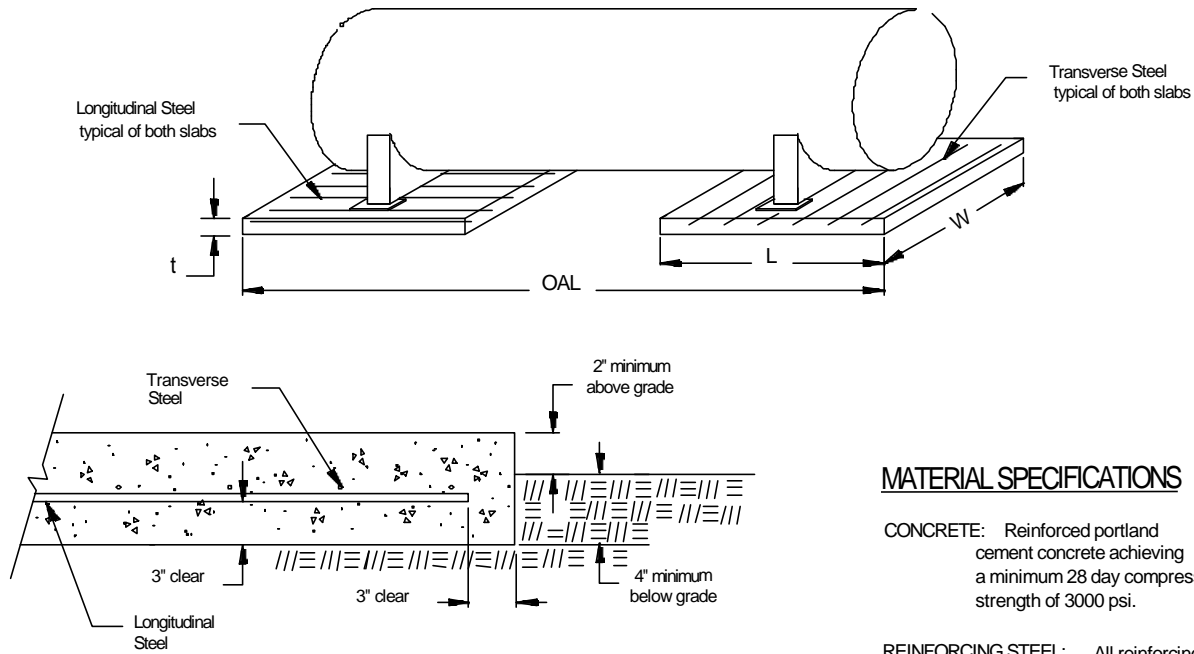
DATE:
4/12/96

REVISION NO.:
0

REVISION DATE:
6/26/96

DRAWING NUMBER
8.101

MINIMUM FOUNDATION REQUIREMENTS



MATERIAL SPECIFICATIONS

CONCRETE: Reinforced portland cement concrete achieving a minimum 28 day compressive strength of 3000 psi.

REINFORCING STEEL: All reinforcing steel shall be deformed bars conforming to ASTM A615 Grade 60. Bar sizes and quantities shown in this table are minimums for each slab.

ANCHOR BOLTS: If required, anchor bolts shall be ITW-RAMSET RedHead Trubolt Wedge Anchors, or equal. Minimum bolt size, quantity, and placement shall be per drawing No. 8.131.

NOTES

1. FOUNDATION SIZES SHOWN HERE ARE DESIGNED TO LIMIT THE MAXIMUM SOIL BEARING PRESSURE TO UNDER 1000 PSF.
2. THE FOUNDATION MAY BE INSTALLED AS INDEPENDENT SLABS AS SHOWN ABOVE OR AS ONE SLAB IF THE REINFORCING STEEL IS CARRIED CONTINUOUSLY THROUGHOUT THE MIDDLE PORTION.
3. THE SLABS MAY BE EXTENDED BEYOND THE TANK FACE WITHOUT CHANGING THE REQUIREMENTS FOR SLAB THICKNESS OR REINFORCEMENT.
4. THESE DETAILS ARE FOR CAST-IN-PLACE SLABS ONLY AND DO NOT APPLY TO PRECAST SLABS.

MODEL NO.	OAL	SLAB SIZES (all dimensions in inches)			REINFORCING STEEL			
		L	W	t	LONGITUDINAL		TRANSVERSE	
					Bar Size	Qty.	Bar Size	Max. Spacing
MH - D1 - 250	56	12	60	6	#4	5	#4	18"
MH - D1 - 500	106	15	60	6	#4	5	#4	18"
MH - D1 - 750	147	18	60	6	#4	5	#4	18"
MH - D2 - 500	56	12	72	6	#4	6	#4	18"
MH - D2 - 750	77	15	72	6	#4	6	#4	18"
MH - D2 - 1000	109	18	72	6	#4	6	#4	18"
MH - D2 - 1500	175	27	72	6	#4	6	#4	18"
MH - D2 - 2000	248	36	72	6	#4	6	#4	18"
MH - D3 - 1000	60	16	84	6	#4	7	#4	18"
MH - D3 - 1500	116	24	84	6	#4	7	#4	18"
MH - D3 - 2000	141	28	84	6	#4	7	#4	18"
MH - D3 - 3000	220	39	84	6	#4	7	#4	18"
MH - D3 - 4000	263	51	84	6	#4	7	#4	18"
MH - D4 - 2000	71	27	108	6	#4	8	#4	18"
MH - D4 - 3000	127	36	108	6	#4	8	#4	18"
MH - D4 - 4000	177	48	108	6	#4	8	#4	18"
MH - D4 - 5000	225	56	108	6	#5	8	#4	18"
MH - D4 - 6000	278	66	108	8	#5	8	#4	13 1/2"
MH - D4 - 8000	383	86	108	8	#6	8	#4	13 1/2"
MH - D4 - 10000	482	93	108	8	#6	8	#4	13 1/2"
MH - D5 - 6000	141	50	132	6	#4	11	#4	18"
MH - D5 - 8000	174	61	132	6	#5	11	#4	18"
MH - D5 - 10000	243	74	132	6	#6	12	#4	18"
MH - D5 - 12000	309	87	132	8	#5	12	#4	13 1/2"
MH - D5 - 15000	373	104	132	9	#6	11	#4	12"
MH - D5 - 20000	525	136	132	12	#6	13	#5	14"

Specifications subject to change without notice.



**INDUSTRIAL METAL
FABRICATORS, INC.**
(888) 333-TANK

SUPERVAULT[®] MH
MULTI-HAZARD RATED, PROTECTED TANK

DATE:
4/12/96

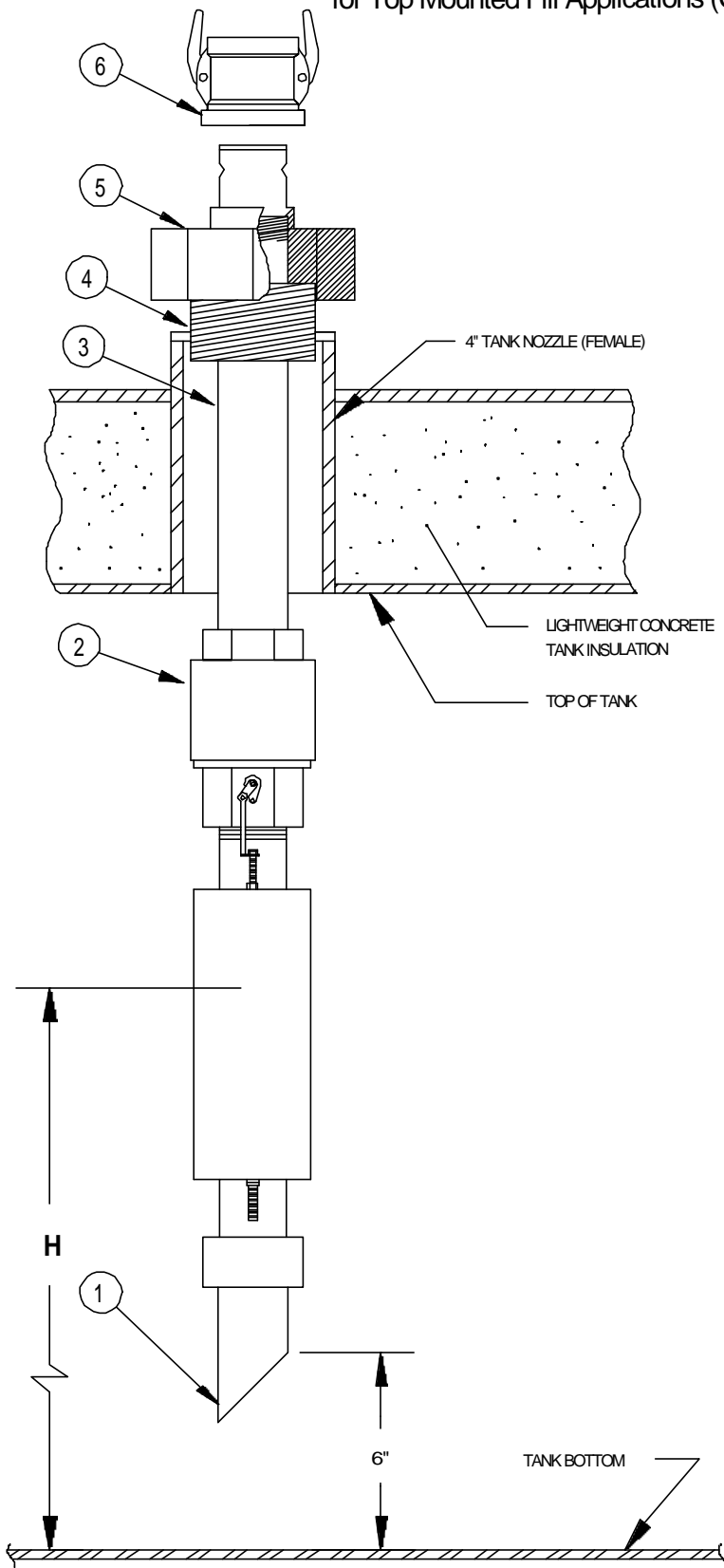
REVISION No.:
2

REVISION DATE:
9/15/98

DRAWING NUMBER
8.121

OVERFILL PREVENTION PACKAGE

for Top Mounted Fill Applications (Cylindrical Tanks)



MATERIAL LIST

1. DROP TUBE, CUT TO LENGTH (MORRISON 419, 2" or 3")
2. FLOAT OPERATED VALVE (MORRISON 9095)
3. FILL PIPE, CUT TO LENGTH
4. CLOSE NIPPLE
5. TIGHT FILL ADAPTOR
6. LOCKABLE CAP (MORRISON 800DCA, 2" or 3")

NOTES

- THIS SYSTEM PROVIDES POSITIVE OVERFILL PREVENTION ON PRESSURIZED DELIVERIES TO ABOVEGROUND TANKS. UPON DISCONNECTION OF SUPPLY HOSE, FUEL IS AUTOMATICALLY DRAINED FROM THE UPPER FILL PIPE.
- SHUTOFF VALVE INSTALLS ON 4" NPT TANK NOZZLE.
- FILL PIPE IS POSITIONED SO THAT THE SHUT OFF POINT (DIMENSION H) IS LOCATED AT 95% OF TANK CAPACITY AND THEN SECURED IN PLACE.
- DROP TUBE IS POSITIONED SO THAT THE CUT END IS A MAXIMUM OF 6" ABOVE THE TANK BOTTOM.
- THE FILL ADAPTOR IS DESIGNED TO BE DIRECT COUPLED ONTO A CAM-LOCK SPOUT ON THE NOZZLE OF THE FUEL DELIVERY TRUCK. THE CAP IS LOCKABLE.

Specifications subject to change without notice.



**INDUSTRIAL METAL
FABRICATORS, INC.**
(888) 333-TANK

SUPERVAULT[®] MH
MULTI-HAZARD RATED, PROTECTED TANK

DATE:
4/12/96

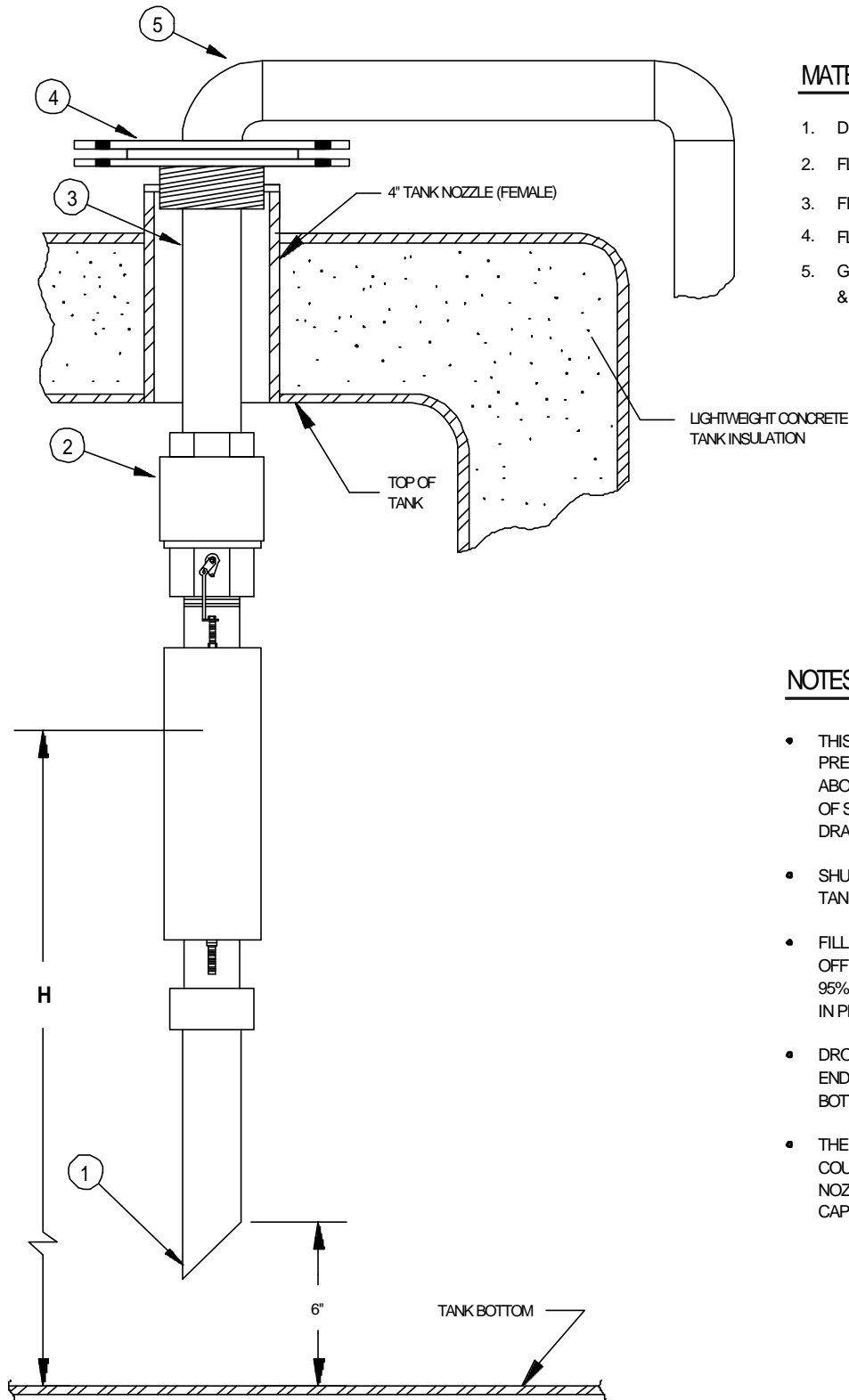
REVISION No.:
1

REVISION DATE:
4/25/01

DRAWING NUMBER
8.311

OVERFILL PREVENTION PACKAGE

for Ground Level Fill Applications (Cylindrical Tanks)



MATERIAL LIST

1. DROP TUBE, CUT TO LENGTH (MORRISON 419, 2" or 3")
2. FLOAT OPERATED VALVE (MORRISON 9095)
3. FILL PIPE, CUT TO LENGTH
4. FLANGE ADAPTOR
5. GROUND LEVEL FILL PIPE (SEE DWG #S 8.253 & 8.256 FOR FURTHER INFO)

NOTES

- THIS SYSTEM PROVIDES POSITIVE OVERFILL PREVENTION ON PRESSURIZED DELIVERIES TO ABOVEGROUND TANKS. UPON DISCONNECTION OF SUPPLY HOSE, FUEL IS AUTOMATICALLY DRAINED FROM THE UPPER FILL PIPE.
- SHUTOFF VALVE INSTALLS ON 4" NPT TANK NOZZLE.
- FILL PIPE IS POSITIONED SO THAT THE SHUT OFF POINT (DIMENSION H) IS LOCATED AT 95% OF TANK CAPACITY AND THEN SECURED IN PLACE.
- DROP TUBE IS POSITIONED SO THAT THE CUT END IS A MAXIMUM OF 6" ABOVE THE TANK BOTTOM.
- THE FILL ADAPTOR IS DESIGNED TO BE DIRECT COUPLED ONTO A CAM-LOCK SPOUT ON THE NOZZLE OF THE FUEL DELIVERY TRUCK. THE CAP IS LOCKABLE.

Specifications subject to change without notice.



**INDUSTRIAL METAL
FABRICATORS, INC.**
(888) 333-TANK

SUPERVAULT[®] MH
MULTI-HAZARD RATED, PROTECTED TANK

DATE:
4/12/96

REVISION No.:
1

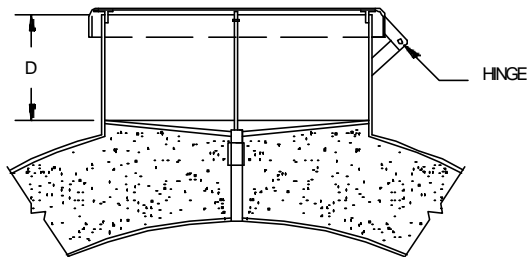
REVISION DATE:
4/25/01

DRAWING NUMBER
8.312

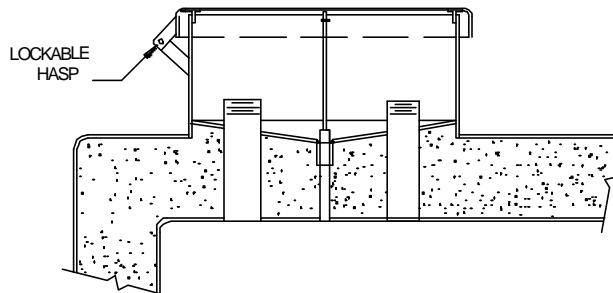
Spill Containment

- Integral Spill Containment Pan
- Screw-On Spill Containment Pan
- Waste Oil Receptacle

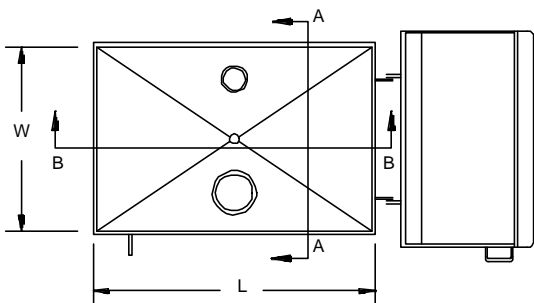
INTEGRAL SPILL CONTAINMENT PAN



SECTION B-B



SECTION A-A



TOP VIEW

MODEL	CAPACITY	W	L	D
8-201-10	10 GALLONS	15	16	10
8-201-16	16 GALLONS	16	24	10

STANDARD EQUIPMENT

1. 3/4" DRAIN VALVE
2. LOCKABLE HINGED COVER
3. 4" FILL FITTING
4. 2" SPARE FITTING

OPTIONAL EQUIPMENT

1. AUTOMATIC FUEL SHUT-OFF VALVE
2. DROP TUBE
3. FILL CAP AND ADAPTER

FEATURES

- THE SPILL CONTAINMENT PAN IS INTENDED TO COLLECT ANY INCIDENTAL SPILLAGE WHICH MAY OCCUR UPON DISCONNECTION OF THE DELIVERY TRUCK HOSE.
- THE SPILL CONTAINMENT PAN IS AN INTEGRAL PART OF THE LISTED TANK ASSEMBLY.
- THE INTEGRAL SPILL CONTAINMENT PAN AND LID ARE CONSTRUCTED OF HEAVY GAUGE STEEL FOR COMMERCIAL/INDUSTRIAL SERVICE DUTY.
- THIS MODEL OF SPILL CONTAINMENT PAN IS OUTSIDE THE PRIMARY TANK SO IT DOES NOT REDUCE THE WORKING CAPACITY OF THE TANK.
- UNLIKE INTERNAL OVERFILL PANS, TRUSCO'S INTEGRAL SPILL CONTAINMENT PAN WILL NOT ALLOW BACKFLOW OF FUEL FROM THE TANK INTO THE PAN IF THE DRAIN VALVE IS OPENED IN A FULL TANK CONDITION.
- HANDLES AND A LOCKABLE HASP ARE STANDARD FEATURES.
- THE SPILL CONTAINMENT PAN WILL BE LOCATED PER STANDARD FITTING CONFIGURATIONS FOR A PARTICULAR TANK SIZE.
- SPECIFY MODEL NUMBER OR CAPACITY WHEN ORDERING.
- THE INTEGRAL SPILL CONTAINMENT PAN IS COLOR COATED TO MATCH THE VAULT WITH A HIGH PERFORMANCE EPOXY AND URETHANE COATING SYSTEM FOR EASY CLEAN UP AND MAINTENANCE.

Specifications subject to change without notice.



**INDUSTRIAL METAL
FABRICATORS, INC.**
(888) 333-TANK

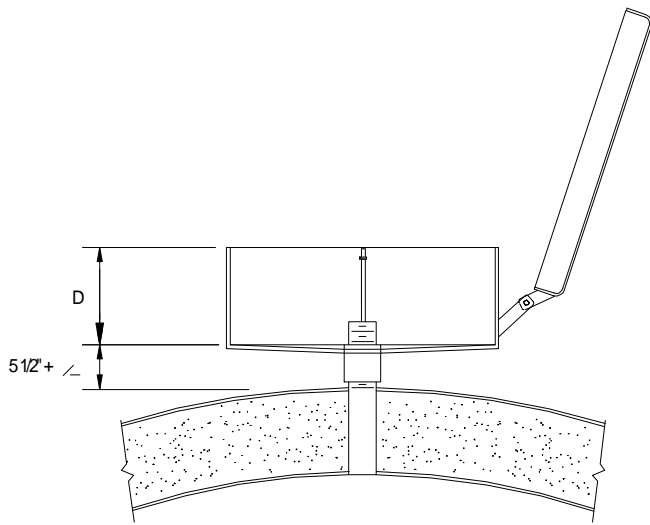
SUPERVAULT[®] MH
MULTI-HAZARD RATED, PROTECTED TANK

DATE:
4/12/96

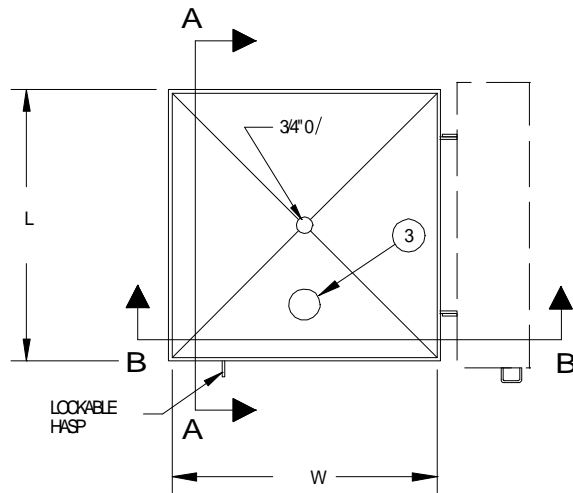
REVISION No.:
0

REVISION DATE:
6/26/96

DRAWING NUMBER
8.201



SECTION BB



PLAN VIEW

- THIS PAN IS INTENDED TO COLLECT ANY INCIDENTAL SPILLAGE WHICH MAY OCCUR UPON DISCONNECTION OF THE DELIVERY TRUCK HOSE
- THE EXTERNAL SPILL CONTAINMENT PAN AND LID ARE CONSTRUCTED OF HEAVY GAUGE STEEL FOR COMMERCIAL INDUSTRIAL SERVICE DUTY.
- THE EXTERNAL SPILL CONTAINMENT PAN MOUNTS ON ANY EXISTING THREADED PIPE ALLOWING EASY INSTALLATION ON NEW OR EXISTING TANKS WITHOUT REDUCING THE WORKING CAPACITY OF THE TANK

STANDARD EQUIPMENT LIST

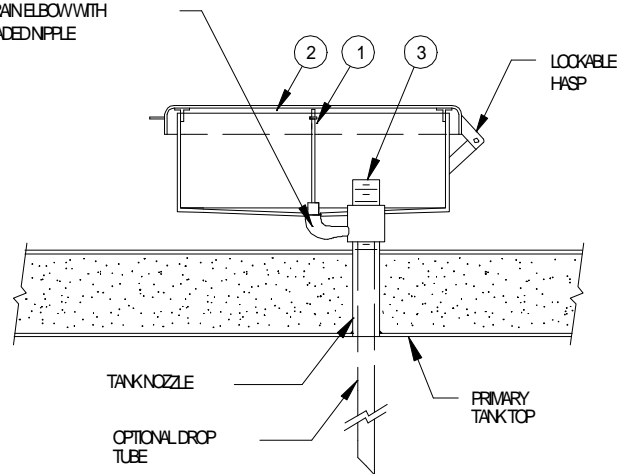
1. DRAIN VALVE
2. LOCKABLE HINGED COVER
3. 2" OR 4" NOZZLE

OPTIONAL EQUIPMENT

1. DROPTUBES
2. FILL ADAPTERS AND CAPS
3. AUTOMATIC FUEL SHUTOFF VALVE

MODEL	CAPACITY	W	L	D
8211-10	10 GALLONS	15 1/4	15 1/4	10
8211-16	16 GALLONS	20	20	10

3/4" DRAIN ELBOW WITH THREADED NIPPLE



SECTION AA

- THE EXTERNAL SPILL CONTAINMENT PAN MAY BE INSTALLED ON A 2" OR 4" EXISTING TANK NOZZLE **SPECIFY NOZZLE SIZE WHEN ORDERING**
- UNLIKE INTERNAL OVERFILL PANS, TRUSCOS EXTERNAL SPILL CONTAINMENT PAN WILL NOT ALLOW BACKFLOW OF FUEL FROM THE TANK INTO THE PAN WHEN THE DRAIN VALVE IS OPENED IN A FULL TANK CONDITION
- THE BOTTOM OF THE EXTERNAL SPILL CONTAINMENT PAN IS SLOPED TOWARD THE DRAIN VALVE TO ALLOW ALL PRODUCT TO BE EMPTIED WHEN THE VALVE IS OPENED.
- THE SCREW ON SPILL CONTAINMENT PAN IS COLOR COATED TO MATCH THE VULT WITH A HIGH PERFORMANCE EPOXY AND URETHANE COATING SYSTEM FOR EASY CLEAN UP AND MAINTENANCE

**SUPERVAULT MH
CONTAINMENT PAN**

SCREW ON SPILL

Specifications subject to change without notice.



**INDUSTRIAL METAL
FABRICATORS, INC.**
(888) 333-TANK

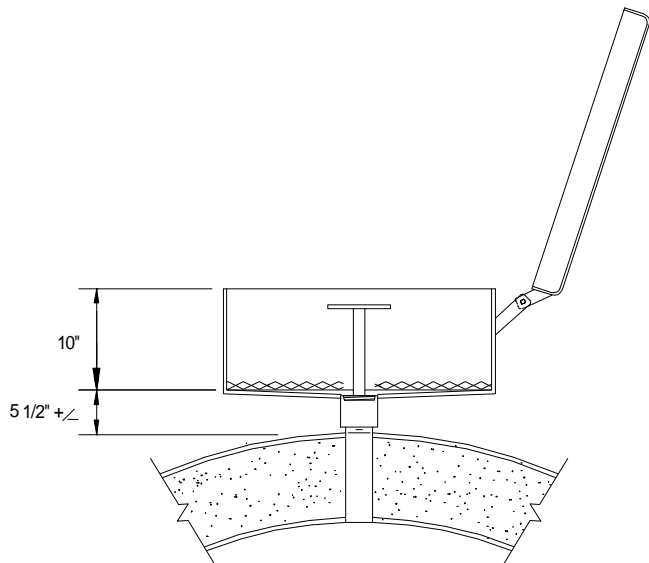
SUPERVAULT [®] **MH**
MULTI-HAZARD RATED, PROTECTED TANK

DATE:
4/12/96

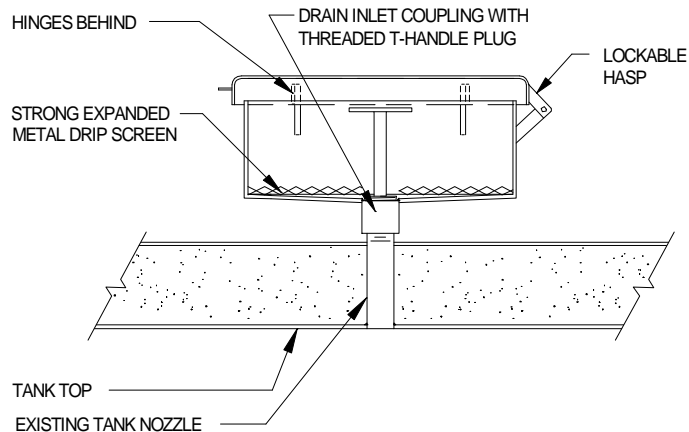
REVISION No.:
0

REVISION DATE:
6/26/96

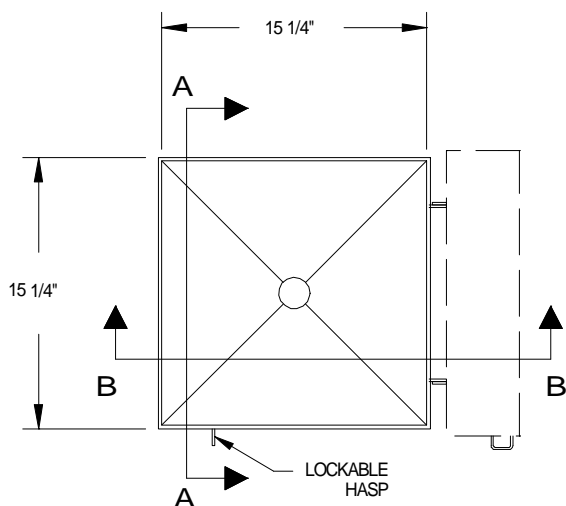
DRAWING NUMBER
8211



SECTION B-B



SECTION A-A



PLAN VIEW

- THE EXTERNAL WASTE OIL RECEPTACLE AND LID ARE CONSTRUCTED OF HEAVY GAUGE STEEL FOR COMERCIAL/INDUSTRIAL SERVICE DUTY. TOTAL CAPACITY IS 10 GALLONS.
- THE EXTERNAL WASTE OIL RECEPTACLE MOUNTS ON ANY EXISTING 4" THREADED PIPE OR ANY 2" THREADED PIPE WITH A REDUCING BUSHING ALLOWING EASY INSTALLATION ON NEW OR EXISTING TANKS. **SPECIFY NOZZLE SIZE WHEN ORDERING.**
- THE EXTERNAL WASTE OIL RECEPTACLE HAS A DRIP SCREEN ACROSS THE BOTTOM OF THE PAN TO ALLOW PARTS TO BE PLACED INSIDE FOR DRAINING OIL.
- THE BOTTOM OF THE EXTERNAL WASTE OIL RECEPTACLE IS SLOPED TOWARD THE DRAIN FITTING TO ALLOW THE PRODUCT TO DRAIN WHEN THE PLUG IS NOT INSTALLED.
- THE EXTERNAL WASTE OIL RECEPTACLE IS COLOR COATED TO MATCH THE VAULT WITH A HIGH PERFORMANCE EPOXY AND URETHANE COATING SYSTEM FOR EASY CLEAN UP AND MAINTENANCE.

SUPERVAULT MH 10 GALLON SCREW-ON WASTE OIL RECEPTACLE

Specifications subject to change without notice.



INDUSTRIAL METAL
FABRICATORS, INC.
(888) 333-TANK

SUPERVAULT[®] MH
MULTI-HAZARD RATED, PROTECTED TANK

DATE:
4/12/96

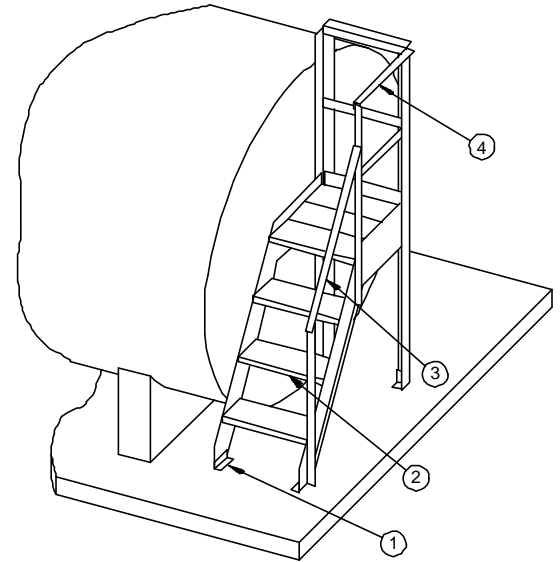
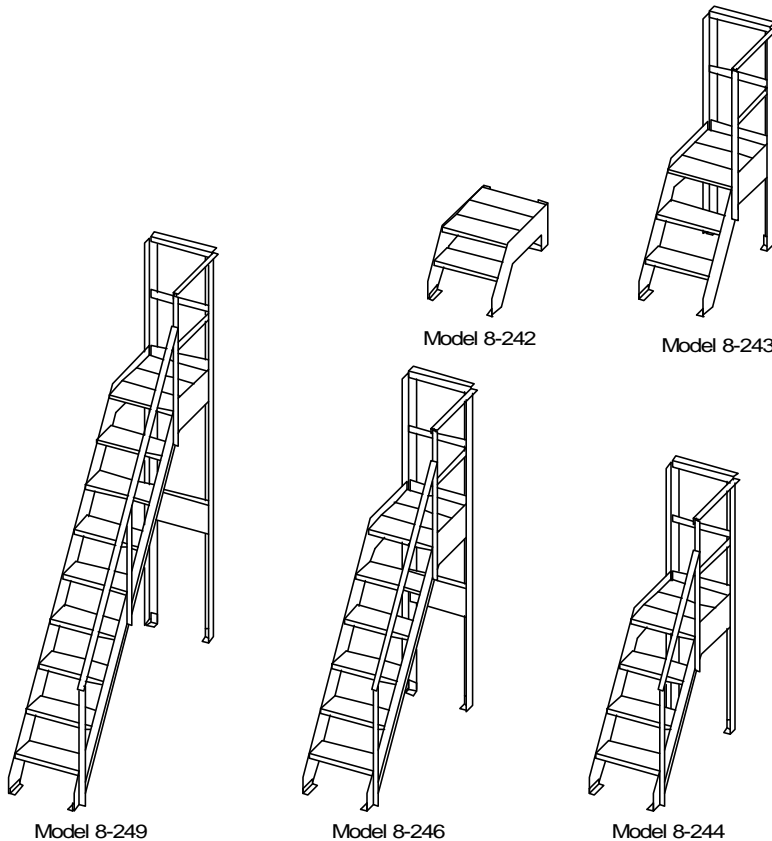
REVISION No. :
0

REVISION DATE :
6/26/96

DRAWING NUMBER
8.221

TANK ACCESS PLATFORM

Platform Model No.	Size	Platform Height	Guard Rail	Grab Rail	Intended for Tank Sizes
8-242	2 Steps	1' 10"	No	No	D1
8-243	3 Steps	2' 9"	Yes	No	D2
8-244	4 Steps	3' 11"	Yes	Yes	D3
8-246	6 Steps	5' 6"	Yes	Yes	D4
8-249	9 Steps	8' 3"	Yes	Yes	D5



COMPONENTS

- ① Anchor bolt attachment plates
- ② GRIP-STRUT Brand Slip-resistant safety tread.
- ③ Grab railing, 2" steel angle
- ④ Platform guard rail, 2" steel angle.

(Right Hand Model 8-244 Illustrated Above on D3 Tank)

THIS ACCESS LADDER AND PLATFORM CONFORMS TO THE FOLLOWING REQUIREMENTS OF 201 CFR 1910 OSHA SAFETY & HEALTH STANDARDS AND TITLE CHAPTER 4, SUBCHAPTER 7, GENERAL INDUSTRY SAFETY ORDERS, OF THE CALIFORNIA ADMINISTRATIVE CODE (CAL / OSHA).

DESIGN LOAD: The platform surface is designed to support a moving load of 1000 pounds. The ladder is designed for a maximum load of 880 pounds concentrated on any two treads.

SLIP RESISTANCE: All walking or stepping surfaces must be slip-resistant, serrated or open tooth gratings only. Diamond plate, floor plate, or smooth treads are not allowed.

PLATFORM SIZE: The platform shall be a minimum of 22 inches in width and 20 inches in length.

RAILINGS: Railings shall be provided on the open side of all exposed fixed ladders. Guardrails shall be installed on open sides of platforms.

FEATURES

CONSTRUCTION: All bolted construction allows left or right handed installations. Standard configuration when factory assembled is right hand.

GRATING: GRIP STRUT brand safety grating and treads are used because they provide superior slip resistance in all directions. The open design permits passage of fluids or other slip inducing materials. Grating is galvanized.

PLATFORM: The platform structure is protected by industrial grade coatings. The treads are galvanized.

ANCHORING: For proper operation and safety the platform assembly must be anchored to its foundation with anchor bolts attached through the base plates.

ASSEMBLY: The access platform is shipped Knocked Down or preassembled per customers request.

Specifications subject to change without notice.



**INDUSTRIAL METAL
FABRICATORS, INC.**
(888) 333-TANK

SUPERVAULT[®] MH
MULTI-HAZARD RATED, PROTECTED TANK

DATE:
4/12/06

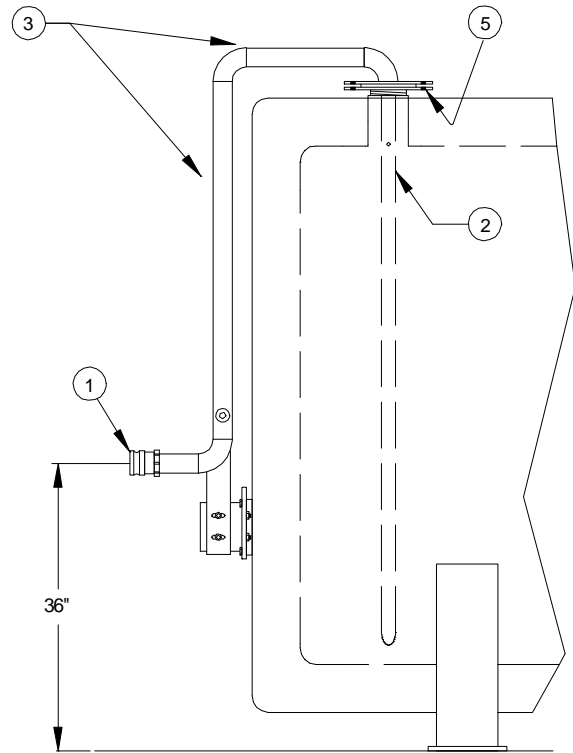
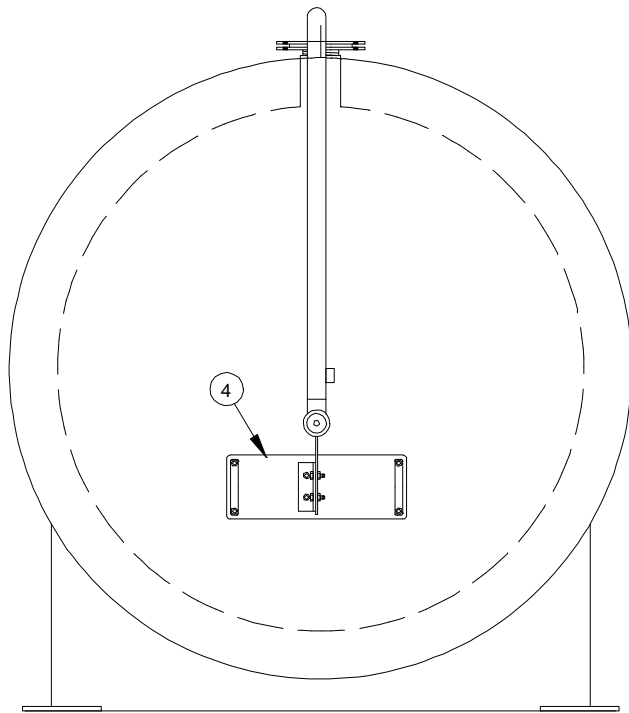
REVISION No.:

REVISION DATE:

DRAWING NUMBER
8 240

Ground Level Fill Systems

- Without Vapor Recovery
- With Spill Pan, Hand Pump, & without Vapor Recovery
- With Vapor Recovery
- With Spill Pan, Hand Pump, & Vapor Recovery
- Waste Oil Storage System



NOTES

- THE GROUND LEVEL FILL SYSTEM ALLOWS THE TANK TO BE FILLED FROM THE GROUND. THIS ELIMINATES THE NEED FOR TANK TOP ACCESS, MAKING THE TANK EASIER TO USE AND REDUCING THE POSSIBILITY OF ACCIDENTS.
- THE DRY BREAK ADAPTOR IS A POPPETED CHECK VALVE WHICH PREVENTS SPILLS OR RISER PIPE DRAINBACK UPON DISCONNECT.
- THE DROP TUBE HAS A BUILT IN ANTI-SIPHON FEATURE IN ACCORDANCE WITH THE UNIFORM FIRE CODE REQUIREMENT FOR PIPING WHICH EXTENDS BELOW THE TOP OF THE TANK.

MATERIAL LIST

1. "DRY-BREAK" STYLE CAMLOCK ADAPTOR
2. DROP TUBE, WITH ANTI-SIPHON FEATURE
3. ALL WELDED, UNITIZED CONSTRUCTION (AVAILABLE IN 2" & 3" PIPE SIZE)
4. UNIVERSAL MOUNTING PLATE
5. FLANGE ADAPTOR

SUPERVAULT MH GROUND LEVEL FILL SYSTEM

without Vapor-Recovery

Specifications subject to change without notice.



INDUSTRIAL METAL
FABRICATORS, INC.
(888) 333-TANK

SUPERVAULT [®] **MH**
MULTI-HAZARD RATED, PROTECTED TANK

DATE:
4/12/96

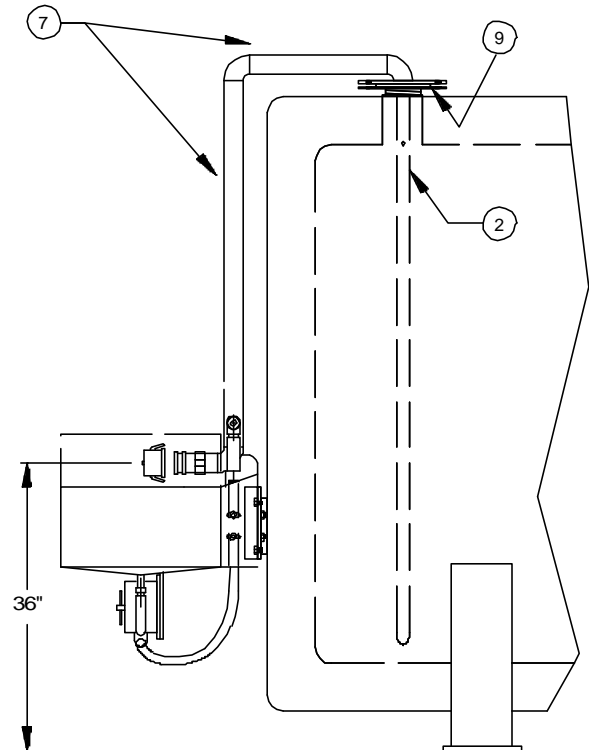
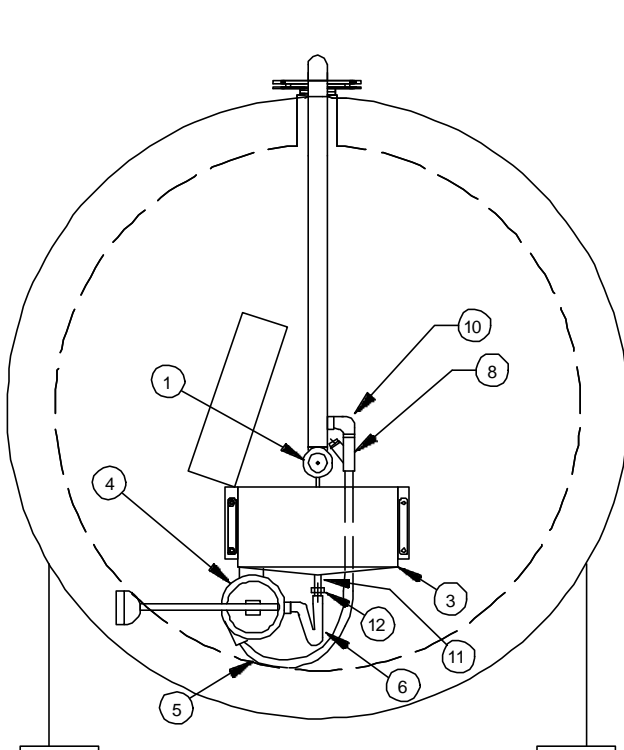
REVISION No.:

REVISION DATE:

DRAWING NUMBER
8.251

GROUND LEVEL FILL SYSTEM

with Spill Pan & Hand Pump, no Vapor-Recovery



NOTES

- THE GROUND LEVEL FILL SYSTEM ALLOWS THE TANK TO BE FILLED FROM THE GROUND. THIS ELIMINATES THE NEED FOR TANK TOP ACCESS, MAKING THE TANK EASIER TO USE AND REDUCING THE POSSIBILITY OF ACCIDENTS.
- THE DRY BREAK ADAPTOR IS A POPPETED CHECK VALVE WHICH PREVENTS SPILLS OR RISER PIPE DRAINBACK UPON DISCONNECT.
- THE DROP TUBE HAS A BUILT IN ANTI-SIPHON FEATURE IN ACCORDANCE WITH THE UNIFORM FIRE CODE REQUIREMENT FOR PIPING WHICH EXTENDS BELOW THE TOP OF THE TANK.
- THE SPILL CONTAINMENT PAN COMPLIES WITH APPENDIX II-F OF THE UNIFORM FIRE CODE.

MATERIAL LIST

1. "DRY-BREAK" STYLE CAMLOCK ADAPTOR WITH CAP
2. DROP TUBE, WITH ANTI-SIPHON FEATURE
3. SPILL CONTAINMENT PAN, 16 GAL. CAPACITY
4. FILL-RITE: FR150 HAND PUMP
5. 3/4" X 4' HOSE, SWIVEL ONE END
6. 3/4" X 12" WHIP HOSE, SWIVEL ONE END
7. ALL WELDED, UNITIZED CONSTRUCTION
(AVAILABLE IN 2" & 3" PIPE SIZE)
8. 3/4" FUEL RETURN SWING CHECK VALVE (Morrison 158A-0300AV)
9. FLANGE ADAPTOR
10. 3/4" STREET ELBOW
11. 3/4" COUPLING
12. 3/4" X 1 BUSHING

Specifications subject to change without notice.



INDUSTRIAL METAL
FABRICATORS, INC.
(888) 333-TANK

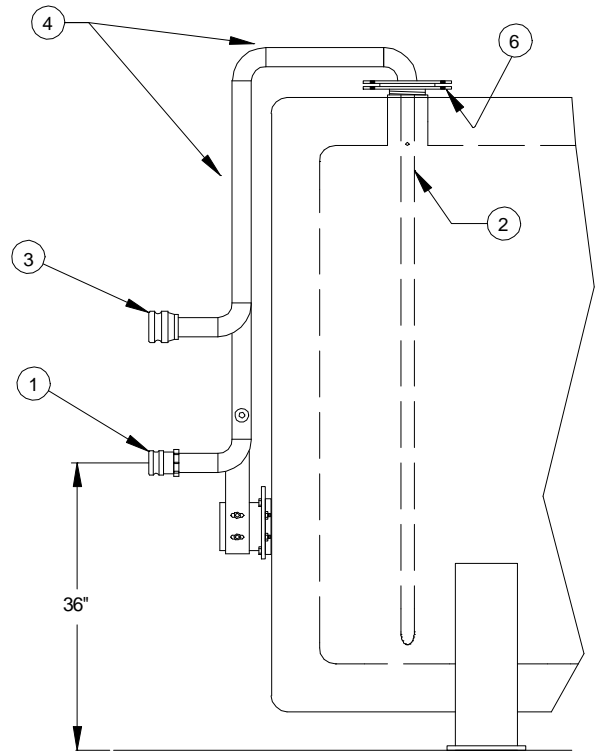
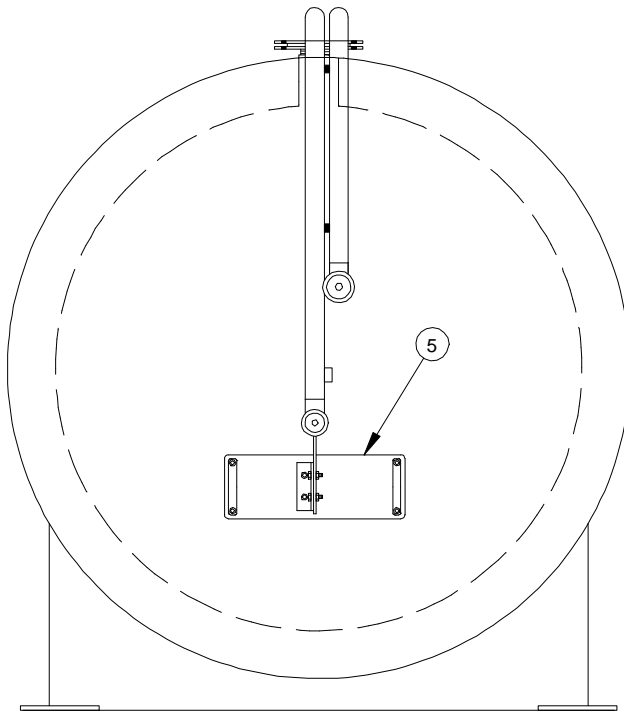
SUPERVAULT [®] **MH**
MULTI-HAZARD RATED, PROTECTED TANK

DATE:
4/12/96

REVISION No.:
1

REVISION DATE:
8/26/99

DRAWING NUMBER
8.253



NOTES

- THE GROUND LEVEL FILL SYSTEM ALLOWS THE TANK TO BE FILLED FROM THE GROUND. THIS ELIMINATES THE NEED FOR TANK TOP ACCESS, MAKING THE TANK EASIER TO USE AND REDUCING THE POSSIBILITY OF ACCIDENTS.
- THE DRY BREAK ADAPTOR IS A POPPETED CHECK VALVE WHICH PREVENTS SPILLS OR RISER PIPE DRAINBACK UPON DISCONNECT.
- THE DROP TUBE HAS A BUILT IN ANTI-SIPHON FEATURE IN ACCORDANCE WITH THE UNIFORM FIRE CODE REQUIREMENT FOR PIPING WHICH EXTENDS BELOW THE TOP OF THE TANK.

MATERIAL LIST

1. "DRY-BREAK" STYLE CAMLOCK ADAPTOR
2. DROP TUBE, WITH ANTI-SIPHON FEATURE
3. POPPETED VAPOR RECOVERY ADAPTOR
4. ALL WELDED, UNITIZED CONSTRUCTION
(AVAILABLE IN 2" & 3" PIPE SIZE)
5. UNIVERSAL MOUNTING PLATE
6. FLANGE ADAPTOR

SUPERVAULT MH GROUND LEVEL FILL SYSTEM

with Vapor-Recovery

Specifications subject to change without notice.



INDUSTRIAL METAL
FABRICATORS, INC.
(888) 333-TANK

SUPERVAULT[®] MH
MULTI-HAZARD RATED, PROTECTED TANK

DATE:
4/12/96

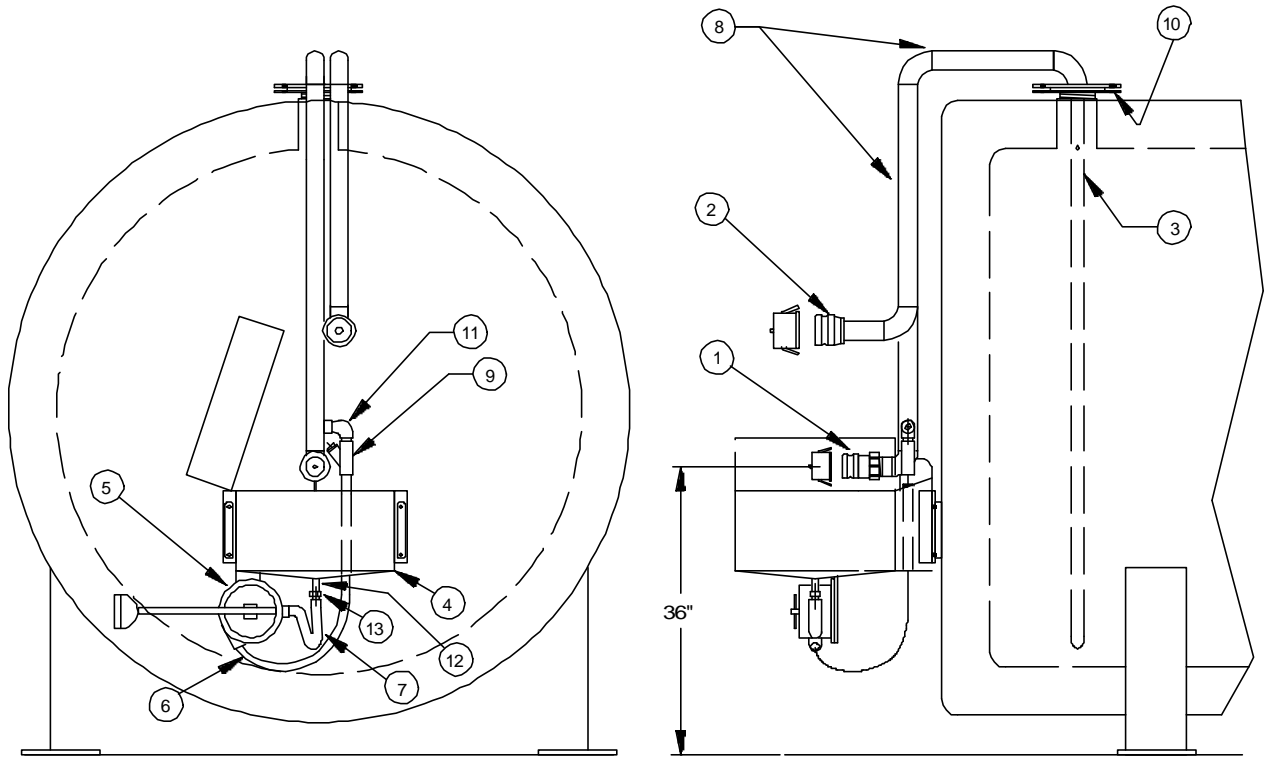
REVISION No.:

REVISION DATE:

DRAWING NUMBER
8.254

GROUND LEVEL FILL SYSTEM

with Spill Pan, Hand Pump & Vapor-Recovery.



NOTES

- THE GROUND LEVEL FILL SYSTEM ALLOWS THE TANK TO BE FILLED FROM THE GROUND. THIS ELIMINATES THE NEED FOR TANK TOP ACCESS, MAKING THE TANK EASIER TO USE AND REDUCING THE POSSIBILITY OF ACCIDENTS.
- THE DRY BREAK ADAPTOR IS A POPPETED CHECK VALVE WHICH PREVENTS SPILLS OR RISER PIPE DRAINBACK UPON DISCONNECT.
- THE DROP TUBE HAS A BUILT IN ANTI-SIPHON FEATURE IN ACCORDANCE WITH THE UNIFORM FIRE CODE REQUIREMENT FOR PIPING WHICH EXTENDS BELOW THE TOP OF THE TANK.

MATERIAL LIST

1. "DRY-BREAK" STYLE CAMLOCK ADAPTOR WITH CAP
2. POPPETED VAPOR RECOVERY ADAPTOR WITH CAP
3. DROP TUBE, WITH ANTI-SIPHON FEATURE
4. SPILL CONTAINMENT PAN, 16 GAL. CAPACITY
5. FILL-RITE: FR150 HAND PUMP
6. 3/4" X 4' HOSE, SWIVEL ONE END
7. 3/4" X 12" WHIP HOSE, SWIVEL ONE END
8. ALL WELDED, UNITIZED CONSTRUCTION (AVAILABLE IN 2" & 3" PIPE SIZE)
9. 3/4" FUEL RETURN SWING CHECK VALVE (Morrison 158A-0300AV)
10. FLANGE ADAPTOR.
11. 3/4" STREET ELBOW
12. 3/4" COUPLING
13. 3/4"X 1 BUSHING

Specifications subject to change without notice.



INDUSTRIAL METAL
FABRICATORS, INC.
(888) 333-TANK

SUPERVAULT[®] MH
MULTI-HAZARD RATED, PROTECTED TANK

DATE:

4/12/96

REVISION No.:

REVISION DATE:

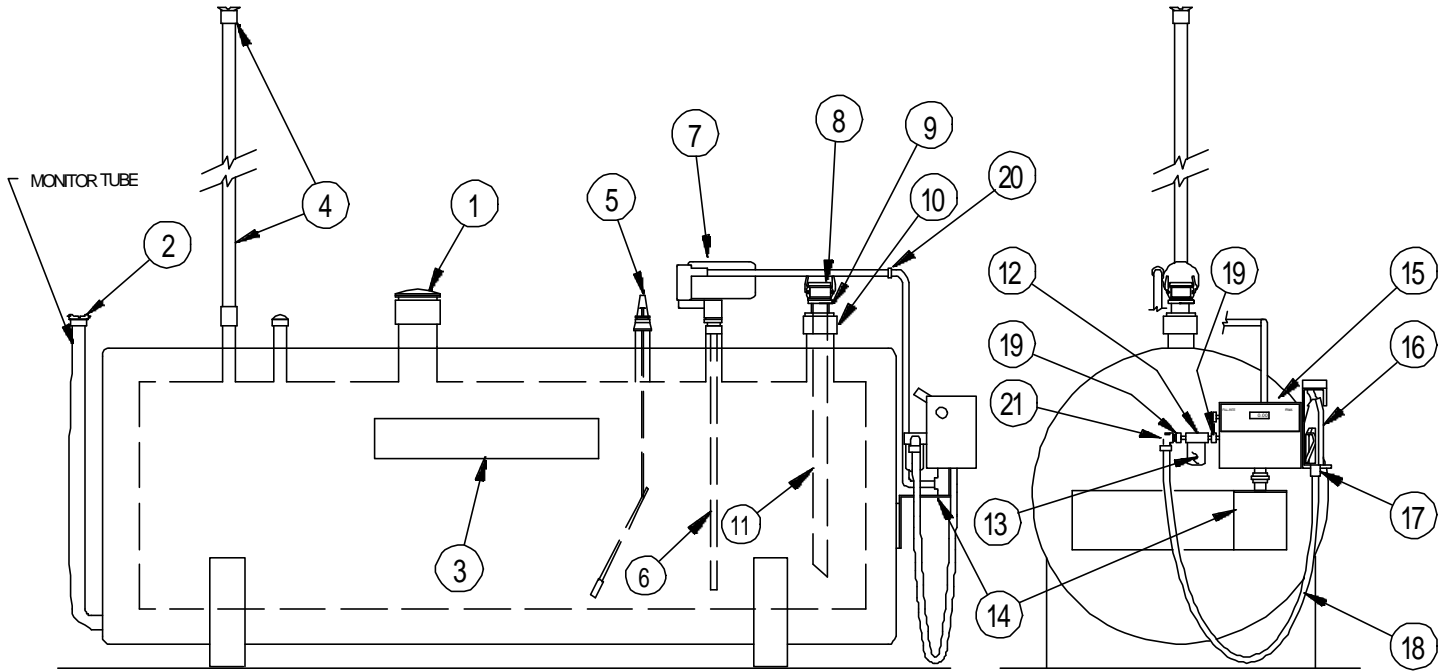
DRAWING NUMBER

8.256

Systems

- **Gasoline Dispensing System**
 - **With Phase I & II Balance Vapor Recovery**
- **Diesel Fuel Dispensing System**
- **Diesel Engine Supply System**
- **Hi-Flow Diesel Fuel Dispensing System**
- **Waste Oil Storage System**

GASOLINE DISPENSING SYSTEM



SIDE VIEW

END VIEW

ITEM #	COMPONENT DESCRIPTION	PART NUMBER *
1	EMERGENCY VENT	MORRISON: 2440M
2	MONITOR TUBE SAFETY CAP	MORRISON: 678XA-000AC
3	DECAL KIT	IMF: 8.305
4	PRESSURE VACUUM VENT WITH RISER	MORRISON: 748A-0400AV, 2, 8oz
5	LEVEL GAUGE	KRUEGER: H2,(SIZE)
6	SUCTION TUBE	SCHEDULE 40 PIPE, 1"
7	18 GPM PUMP WITH ANTI-SIPHON DEVICE	FILL-RITE: FR713
8	FILL CAP	MORRISON: 800DCA-0400, 2"
9	FILL CAP ADAPTOR	MORRISON: 305-0000AA, 2"
10	4" FIPT x 2" MIPT ADAPTOR	SCHEDULE 40 PIPE
11	DROP TUBE	MORRISON: 419, 2"
12	FILTER ADAPTOR	CIM-TEK: 200H-34
13	FILTER ELEMENT	CIM-TEK: 300HS10
14	PUMP SUPPORT	IMF: 8.235
15	DISPENSER WITH METER & HOOK	FILL-RITE: FR305
16	NOZZLE	OPW: 11A (leaded), 11AP (unleaded)
17	NOZZLE SWIVEL	34"
18	HOSE ASSEMBLY	34" x 12
19	MAINTENANCE VALVES (2)	34" BRASS BALL VALVE
20	1" UNION	SCHEDULE 40 PIPE
21	34" 90° STREET ELL	

- NOTES: 1. THE EQUIPMENT PACKAGE IS INSTALLED WITH ALL PIPING, UNIONS, ELBOWS, TEES AND COUPLINGS SHOWN. PIPING BEYOND THE FITTINGS SHOWN IS THE RESPONSIBILITY OF THE PURCHASER. AN OPTIONAL HOSE RETRACTOR MAY BE ADDED TO THIS SYSTEM.
2. OPTIONS AVAILABLE UPON REQUEST: INTEGRAL SPILL CONTAINMENT PAN (SEE DRAWING 8.201) OR GROUND LEVEL FILL SYSTEM WITH OR WITHOUT SPILL PAN (SEE DRAWINGS 8.251 & 8.253).
3. TOP MOUNTED COMPACT CABINET PUMP SYSTEM AVAILABLE UPON REQUEST (FILL-RITE MODEL FR702RU).

* Equipment and Specifications subject to change without notice.

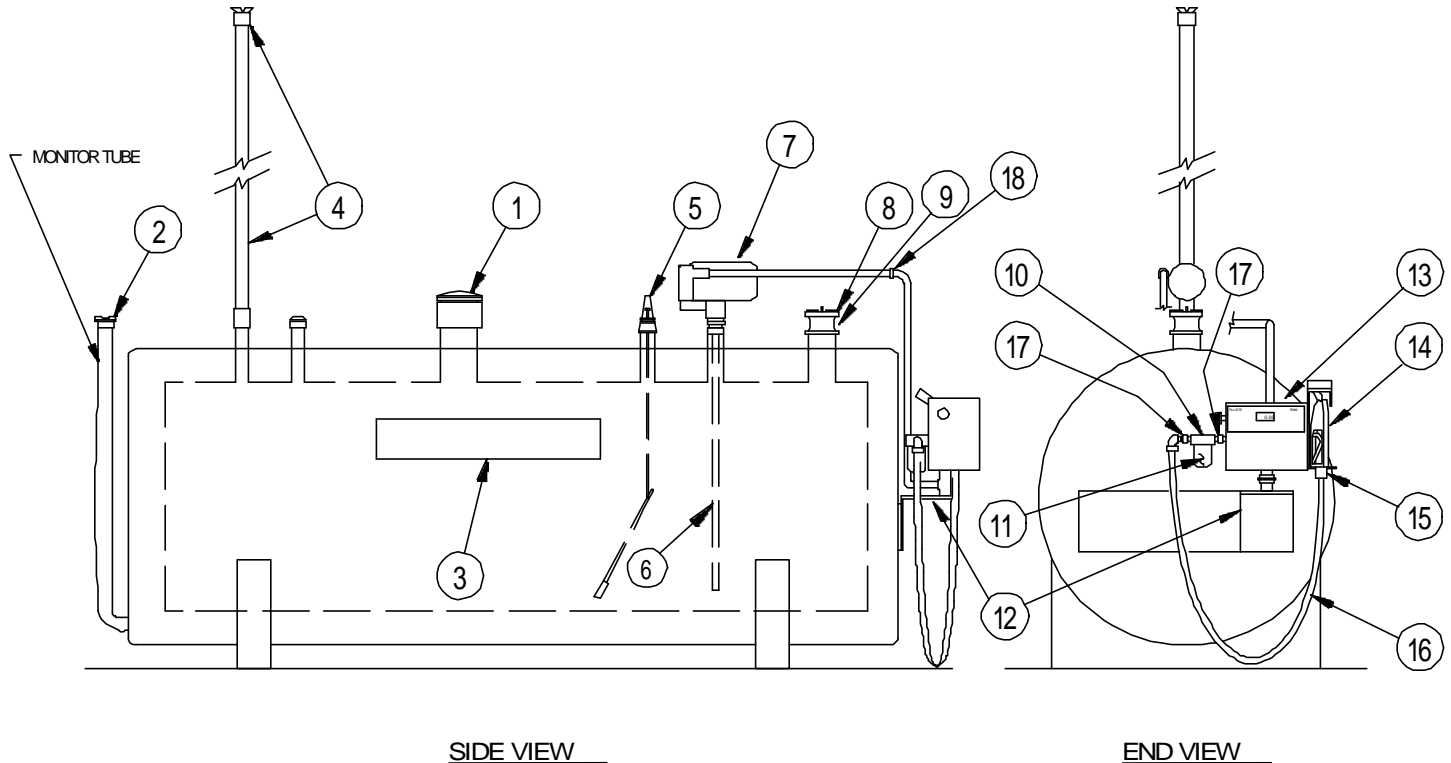


**INDUSTRIAL METAL
FABRICATORS, INC.**
(888) 333-TANK

SUPERVAULT[®] MH
MULTI-HAZARD RATED, PROTECTED TANK

DATE: 4/12/96	REVISION No.: 3	REVISION DATE: 3/07/00	DRAWING NUMBER 8.320
------------------	--------------------	---------------------------	-------------------------

DIESEL FUEL DISPENSING SYSTEM



ITEM #	COMPONENT DESCRIPTION	PART NUMBER *
1	EMERGENCY VENT	MORRISON: 2440M
2	MONITOR TUBE SAFETY CAP	MORRISON: 678YA-000AC
3	DECAL KIT	IMF: 8.305
4	UPDRAFT VENT WITH RISER	MORRISON: 354, 2"
5	LEVEL GAUGE	KRUEGER: H2-(SIZE)
6	SUCTION TUBE	SCHEDULE 40 PIPE, 1"
7	18 GPM PUMP WITH ANTI-SIPHON DEVICE	FILL-RITE: FR713
8	FILL CAP	MORRISON: 305C-0100AC, 4"
9	FILL CAP ADAPTOR	MORRISON: 305L-0200AA, 4"
10	FILTER ADAPTOR	CIMTEK: 200AH, 1"
11	FILTER ELEMENT	CIMTEK: 200AE, 1"
12	PUMP SUPPORT	IMF: 8.235
13	DISPENSER WITH METER & HOOK	FILL-RITE: FR305
14	NOZZLE	OPW: 11A-0100 (diesel)
15	NOZZLE SWIVEL	1"
16	HOSE ASSEMBLY	1" x 12'
17	MAINTENANCE VALVES (2)	1" BRASS BALL VALVE
18	1" UNION	SCHEDULE 40 PIPE

- NOTES: 1. THE EQUIPMENT PACKAGE IS INSTALLED WITH ALL PIPING, UNIONS, ELBOWS, TEES AND COUPLINGS SHOWN. PIPING BEYOND THE FITTINGS SHOWN IS THE RESPONSIBILITY OF THE PURCHASER. AN OPTIONAL HOSE RETRACTOR MAY BE ADDED TO THIS SYSTEM.
 2. OPTIONS AVAILABLE UPON REQUEST: INTEGRAL SPILL CONTAINMENT PAN (SEE DRAWING 8.201) OR GROUND LEVEL FILL SYSTEM WITH OR WITHOUT SPILL PAN (SEE DRAWINGS 8.251 & 8.253).
 3. TOP MOUNTED COMPACT CABINET PUMP SYSTEM AVAILABLE UPON REQUEST (FILL-RITE MODEL FR702RU).

* Equipment and Specifications subject to change without notice.

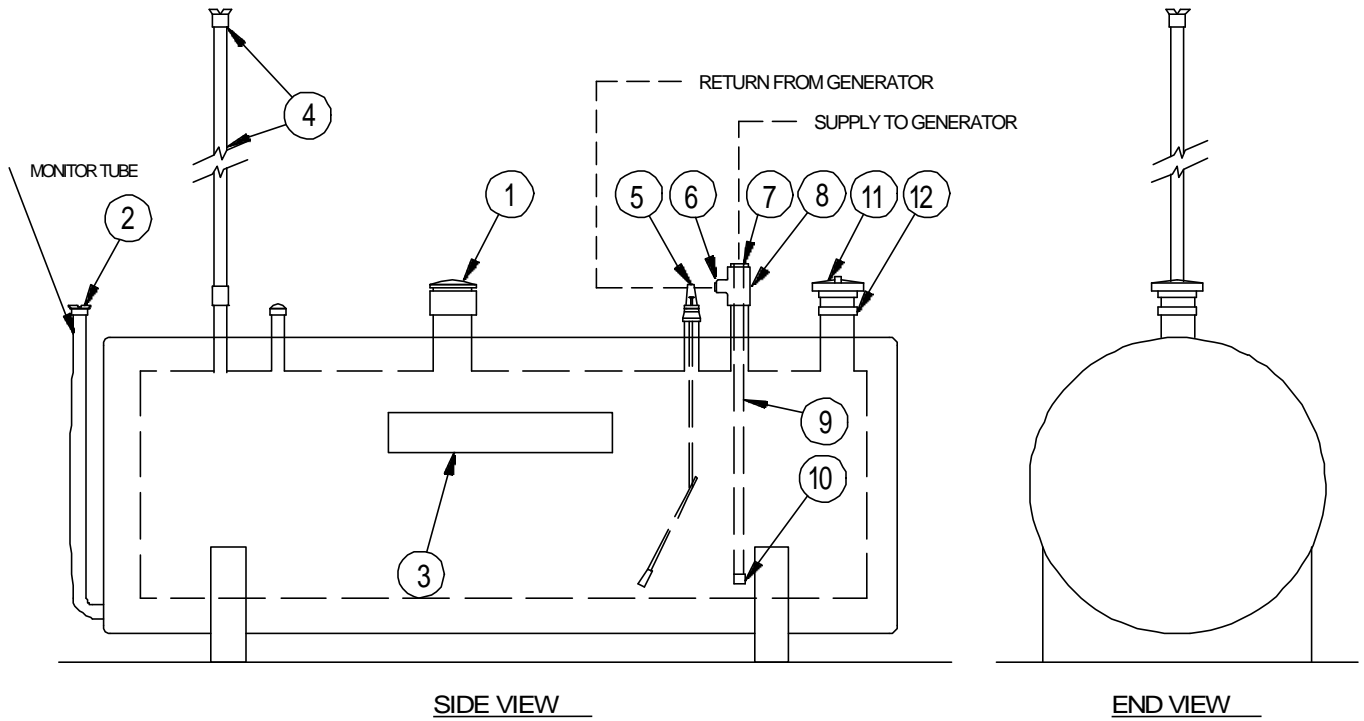


**INDUSTRIAL METAL
FABRICATORS, INC.**
(888) 333-TANK

SUPERVAULT[®] MH
MULTI-HAZARD RATED, PROTECTED TANK

DATE: 4/12/96	REVISION No.: 2	REVISION DATE: 3/07/00	DRAWING NUMBER 8.340
------------------	--------------------	---------------------------	-------------------------

DIESEL ENGINE SUPPLY



ITEM #	COMPONENT DESCRIPTION	PART NUMBER *
1	EMERGENCY VENT	MORRISON: 2440M
2	MONITOR TUBE SAFETY CAP	MORRISON: 678XA-0000AC
3	DECAL KIT	IMF: 8.305
4	UPDRAFT VENT WITH RISER	MORRISON: 354, 2'
5	LEVEL GAUGE	KRUEGER: H2(SIZE)
6	1" PLUG	
7	DOUBLE TAP BUSHING	2' x 1" NPT
8	2' X 1" SCH 40 TEE	
9	SUCTION TUBE	SCHEDULE 40 PIPE, 1"
10	FOOT VALVE, DOUBLE POPPET	CPV: 92-0044, 1"
11	FILL CAP	MORRISON: 305C-0100AC, 4"
12	FILL CAP ADAPTOR	MORRISON: 305L-0200AA, 4"

NOTE: THE EQUIPMENT PACKAGE IS INSTALLED WITH ALL PIPING, UNIONS, ELBOWS, TEES AND COUPLINGS SHOWN. PIPING BEYOND THE FITTINGS SHOWN IS THE RESPONSIBILITY OF THE PURCHASER.

* Equipment and Specifications subject to change without notice.



**INDUSTRIAL METAL
FABRICATORS, INC.**
(888) 333-TANK

SUPERVAULT[®] MH
MULTI-HAZARD RATED, PROTECTED TANK

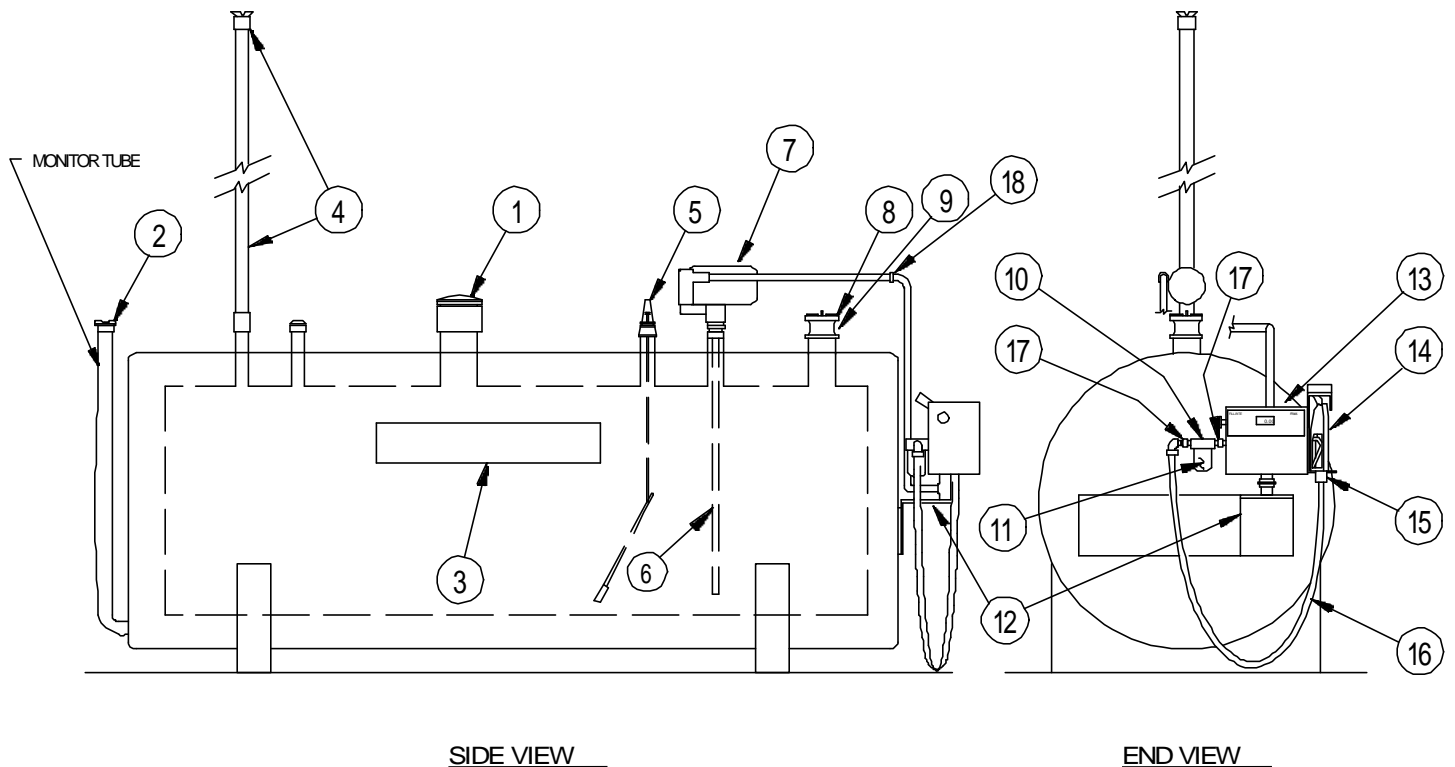
DATE:
4/12/96

REVISION No.:
2

REVISION DATE:
3/07/00

DRAWING NUMBER
8.345

HI-FLOW DIESEL FUEL DISPENSING SYSTEM



ITEM #	COMPONENT DESCRIPTION	PART NUMBER *
1	EMERGENCY VENT	MORRISON: 2440M
2	MONITOR TUBE SAFETY CAP	MORRISON: 678YA-000AC
3	DECAL KIT	IMF: 8.305
4	UPDRAFT VENT WITH RISER	MORRISON: 354, 2"
5	LEVEL GAUGE	KRUEGER: H2-(SIZE)
6	SUCTION TUBE	SCHEDULE 40 PIPE, 1"
7	30 GPM PUMP WITH ANTI-SIPHON DEVICE	FILL-RITE: FR313
8	FILL CAP	MORRISON: 305C-0100AC, 4"
9	FILL CAP ADAPTOR	MORRISON: 305L-0200AA, 4"
10	FILTER ADAPTOR	CIMTEK: 805, 1"
11	FILTER ELEMENT	CIMTEK: 800HS10, 1"
12	PUMP SUPPORT	IMF: 8.235
13	DISPENSER WITH METER & HOOK	FILL-RITE: FR305
14	NOZZLE	OPW: 11A-0100 (diesel)
15	NOZZLE SWIVEL	1"
16	HOSE ASSEMBLY	1" x 17'
17	MAINTENANCE VALVES (2)	1" BRASS BALL VALVE
18	1" UNION	SCHEDULE 40 PIPE

- NOTES: 1. THE EQUIPMENT PACKAGE IS INSTALLED WITH ALL PIPING, UNIONS, ELBOWS, TEES AND COUPLINGS SHOWN. PIPING BEYOND THE FITTINGS SHOWN IS THE RESPONSIBILITY OF THE PURCHASER. AN OPTIONAL HOSE RETRACTOR MAY BE ADDED TO THIS SYSTEM.
 2. OPTIONS AVAILABLE UPON REQUEST: INTEGRAL SPILL CONTAINMENT PAN (SEE DRAWING 8.201) OR GROUND LEVEL FILL SYSTEM WITH OR WITHOUT SPILL PAN (SEE DRAWINGS 8.251 & 8.253).
 3. TOP MOUNTED COMPACT CABINET PUMP SYSTEM AVAILABLE UPON REQUEST (FILL-RITE MODEL FR702RU).

* Equipment and Specifications subject to change without notice.



**INDUSTRIAL METAL
FABRICATORS, INC.**
(888) 333-TANK

SUPERVAULT[®] MH
MULTI-HAZARD RATED, PROTECTED TANK

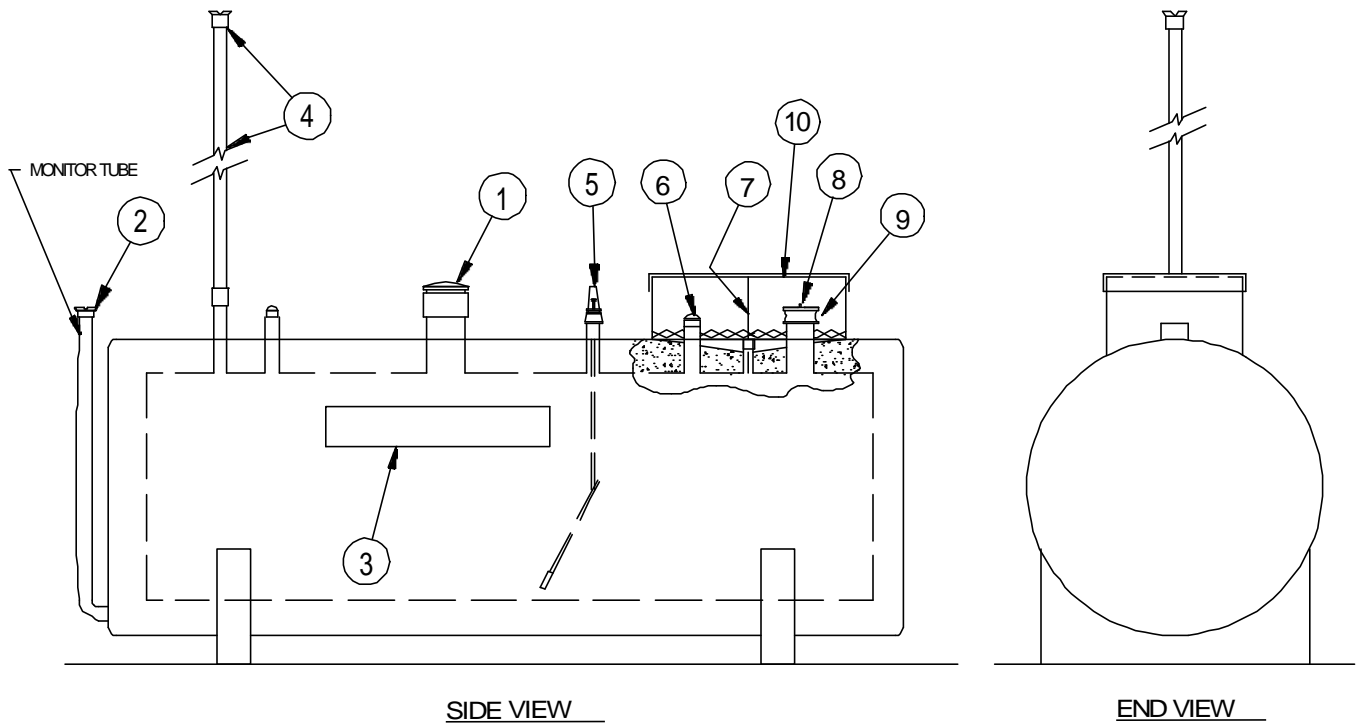
DATE:
3/07/00

REVISION No.:

REVISION DATE:

DRAWING NUMBER
8.341

WASTE OIL STORAGE SYSTEM



ITEM #	COMPONENT DESCRIPTION	PART NUMBER *
1	EMERGENCY VENT	MORRISON: 2440M
2	MONITOR TUBE SAFETY CAP	MORRISON: 678XA00004C
3	DECAL KIT	IMF: 8.305
4	UPDRAFT VENT WITH RISER	MORRISON: 354, 2'
5	LEVEL GAUGE	KRUEGER: H2(SIZE)
6	2" PLUG	
7	3/4" DRAIN VALVE	
8	SUCTION PORT CAP	OPW: 6341T-7085, 4"
9	SUCTION PORT ADAPTOR	OPW: 633T-8076, 4"
10	16 GALLON INTEGRAL WASTE OIL RECEPTACLE with LOCKABLE COVER and DRIP SCREEN	IMF: 8.221

NOTE: THE EQUIPMENT PACKAGE IS INSTALLED WITH ALL PIPING, UNIONS, ELBOWS, TEES AND COUPLINGS SHOWN. PIPING BEYOND THE FITTINGS SHOWN IS THE RESPONSIBILITY OF THE PURCHASER.

* Equipment and Specifications subject to change without notice.



**INDUSTRIAL METAL
FABRICATORS, INC.**
(888) 333-TANK

SUPERVAULT[®] MH
MULTI-HAZARD RATED, PROTECTED TANK

DATE:
4/12/96

REVISION No.:
2

REVISION DATE:
3/07/00

DRAWING NUMBER
8.350



(one each side)

CAPACITY

6,000 GALLONS

(sample)

1 1/2" BLACK LETTERS
ON WHITE BACKGROUND
(one for each compartment locate
adjacent to fill nozzle)

FUEL TYPE

UNLEADED

REGULAR

DIESEL

WASTE OIL

1 1/2" WHITE LETTERS
ON RED BACKGROUND
(one adjacent to fill nozzle and
one adjacent to pump)

NOZZLE I.D.'s

FILL

VENT

EMER. VENT

MONITOR TUBE

1" RED LETTERS
ON WHITE BACKGROUND
(one near tank fitting)

CAUTION: THIS TANK TO CONTAIN
PETROLEUM PRODUCTS ONLY

1" & 3/4" BLACK LETTERS
ON WHITE BACKGROUND
(one for each compartment locate
adjacent to fill nozzle)

NO SMOKING

3" RED LETTERS, 1/2" STROKE
ON WHITE BACKGROUND
(one each side)

FLAMMABLE

(for gasoline systems)

3" RED LETTERS, 1/2" STROKE
ON WHITE BACKGROUND
(one each side)

COMBUSTIBLE

(for diesel and waste oil systems)

3" RED LETTERS, 1/2" STROKE
ON WHITE BACKGROUND
(one each side)

SUPERVAULT MH DECAL KIT

Specifications subject to change without notice.



INDUSTRIAL METAL
FABRICATORS, INC.
(888) 333-TANK

SUPERVAULT[®] MH
MULTI-HAZARD RATED, PROTECTED TANK

DATE :
4/12/96

REVISION No. :

REVISION DATE :

DRAWING NUMBER
8.305