

A World Leader in Custom Metal Fabrication



**INDUSTRIAL METAL
FABRICATORS, INC.**



Thomas F. McManious, founder

A History of Excellence and Diversity

Founded in 1956 by Thomas F. McManious, Industrial Metal Fabricators, Inc. began as a sheet metal shop serving the textile industry in Columbus, Georgia. From that modest beginning, IMF has continued to grow, earning a world-wide reputation for state-of-the-art metal products.

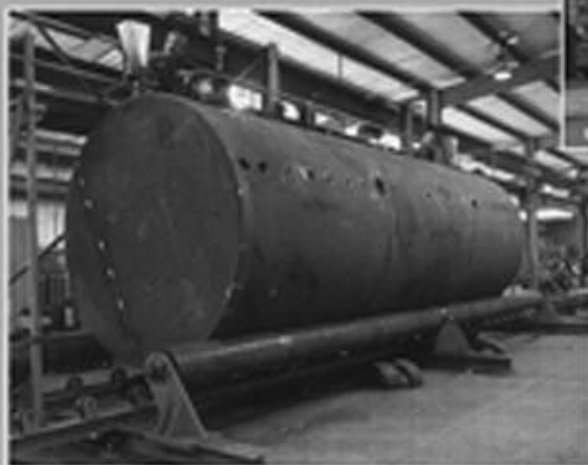
Today, customers include leaders in the aircraft, construction, paper, and tobacco industries as well as local, state and federal agencies. Decades of experience, highly skilled employees and cutting edge technology make Industrial Metal Fabricators the right choice for quality and service.



Sales and Engineering Support to Do the Job Right

The emphasis on product quality and customer satisfaction begins with our sales staff at Industrial Metal Fabricators, Inc. These experienced, knowledgeable representatives have over a century of combined industry experience and will assist customers in each phase of the project, from consulting and designing to estimating and quoting.

During this process, sales representatives confer with our engineering department to ensure that sound engineering principles are incorporated in the project. They also make sure that pricing, manufacturing lead times, and other pertinent information are communicated to the customer.



Once the order is placed, engineering begins the manufacturing process, using the latest state-of-the-art tools to produce drawings and other documentation. This cooperative effort by sales, engineering, and manufacturing is your assurance that the finished product meets the highest possible quality standards.

State-of-the Art Manufacturing and Equipment

As one of the nation's most diversified custom metal fabricators, Industrial Metal Fabricators has the modern technology and skilled labor force to complete the most elaborate projects while drastically reducing production time.

Our sixty thousand square foot manufacturing facility offers customers the industry's latest metal handling technology. This equipment arsenal includes the MGCNC Plasma Cutting System, the Pullmax CNC Pressbrake, and the Bystronic Bystar Laser Cutting System with Automated Material Handling System. These state-of-the-art machines allow IMF to successfully weld, shear, cut, form, punch, roll, machine and paint a wide variety of metals, from carbon steel to stainless steel and aluminum.



Advanced Metal Fabricating Equipment

Shearing

- Hercules – 1/2" x 10'
- Pexto – 10ga x 10'

Cutting

- Two Meba Horizontal Band Saws (16" x 8" capacity)
- Promacut Cold Saw (10" x 5" capacity)
- Doall Vertical Band Saw (12" capacity)
- Two Hypertherm Plasma (1/2" capacity)

Forming

- Pullmax CNC Pressbrake (350 ton x 15' – 6 axis)
- Wisconsin Forcemaster Mechanical (225 ton capacity 12' long)
- Pacific Hydraulic (100 ton capacity 10' long)
- Webb Model M-4 Offset Roll (3/8" capacity)
- Blue Valley #4 Flanger (3/8" capacity)

Rolling

- Roundo Plate Roll (3/8" x 8" capacity)
- Lown Plate Roll (10ga x 4' capacity)
- Edwards Angle Roll (3 x 3 x 1/4" capacity)

Specialty Cutting

- Bystronic Bystar 3015-2 CNC Laser Cutting System – 3000-watt laser resonator, fully automated material handling system
- MG Multi-Process Metal Master – 8' x 20' table – 200 amp conventional plasma – 70 amp Hi-definition plasma

Punching

- IMF Hydraulic Punch (40 ton capacity)
- Wiedemann Turret Punch (25 ton capacity)
- Peddinghaus Ironworker (50 ton capacity)

Welding

- Fourteen GMAW Welding Stations – 300 amp
- Two GTAW Welding Stations – 300 amp
- One Cobramatic Welding Station – 250 amp
- Nelson Stud Welder – 500 amp
- Two SMAW Welding Stations – 300 amp
- Miller Spotwelder – 20 KVA
- Three SAW Welding Stations – 600 amp

Cranes

- Six 10,000# Overhead with 270' runway – 18' under hook

Painting

- Spray Booth with exhaust system

Machine Shop

- Mazak Engine Lathe (26" x 120" capacity)
- Victor Engine Lathe (28" x 160" capacity)
- Kurim Milling Machine Horizontal/Vertical 20" x 55" travel
- Breda Radial Arm Drill 4' arm



**INDUSTRIAL METAL
FABRICATORS, INC.**

P.O. Box 7066, 7007 Flat Rock Rd.
Columbus, Georgia 31908

Phone: (706)561-1415 Fax: (706)561-4051

Toll-Free: (888)333-TANK(8265)

E-mail: info@industrialmetal.com

Website: www.industrialmetal.com